

ISLEVER

VCPC-510

VMware Certified Professional on vCloud

DEMO

<https://www.islever.com/vcpc-510.html>

<https://www.islever.com/vmware.html>

For the most up-to-date exam questions and materials, we recommend visiting our website, where you can access the latest content and resources.

QUESTION NO: 1

-- Exhibit --

The screenshot shows a network configuration window with three tabs: "Name and Description", "Network Specification", and "Syslog Server Settings". The "Network Specification" tab is active. It contains the following fields:

- Network mask: 255.255.255.0 *
- Default gateway: 192.168.20.254 *
- Primary DNS: (empty)
- Secondary DNS: (empty)
- DNS suffix: (empty)

Static IP pool:

Enter an IP range (format: 192.168.1.2 - 192.168.1.100) or IP address and click Add.

IP Range	Buttons
192.168.20.1 - 192.168.20.100	Modify, Remove

Total: 100

At the bottom of the window are "OK" and "Cancel" buttons.

-- Exhibit --

Click the Exhibit button.

An administrator needs to modify the range of static IP addresses available to the network in question. The administrator clicks on the Network Specification tab and is presented the options shown in the exhibit, which cannot be selected.

What is a possible cause for this issue?

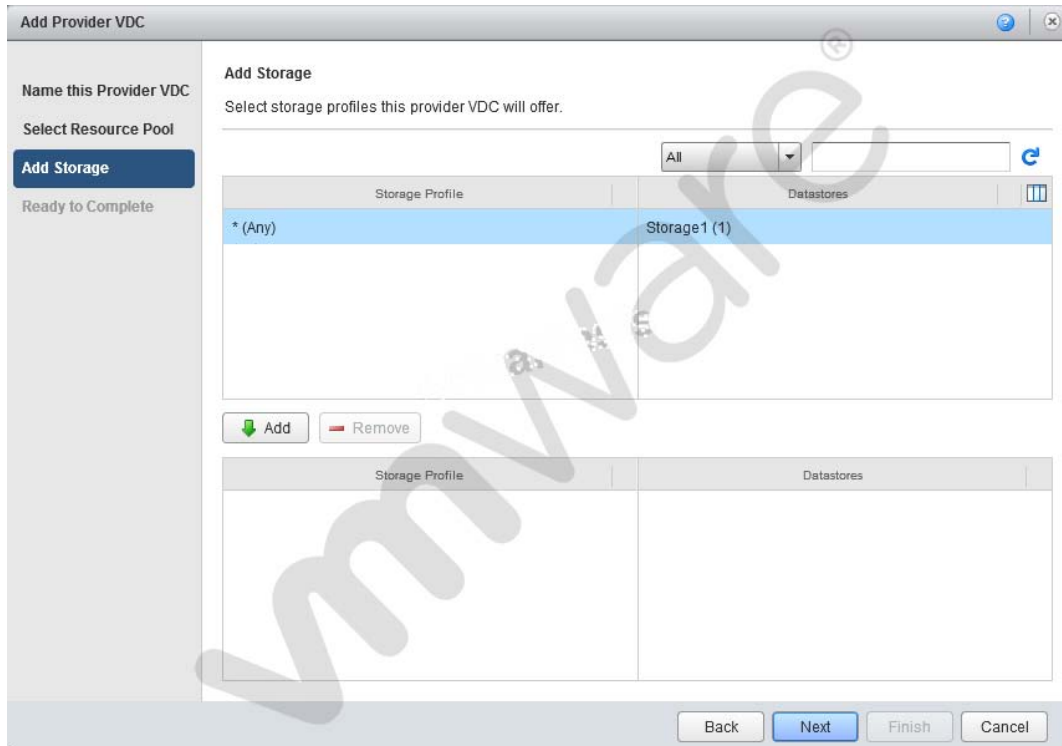
- A. The administrator does not have the vShield Manager role.
- B. The administrator does not have the organization administrator role.
- C. The vShield Edge appliance has been powered off and is inaccessible.
- D. The network in question is a direct connected external organization network.

Answer: D

Explanation:

QUESTION NO: 2

-- Exhibit --



-- Exhibit --

Click the Exhibit button.

When adding storage in the Provider vDC wizard you don't see the intended Storage Profile. What could be the cause?

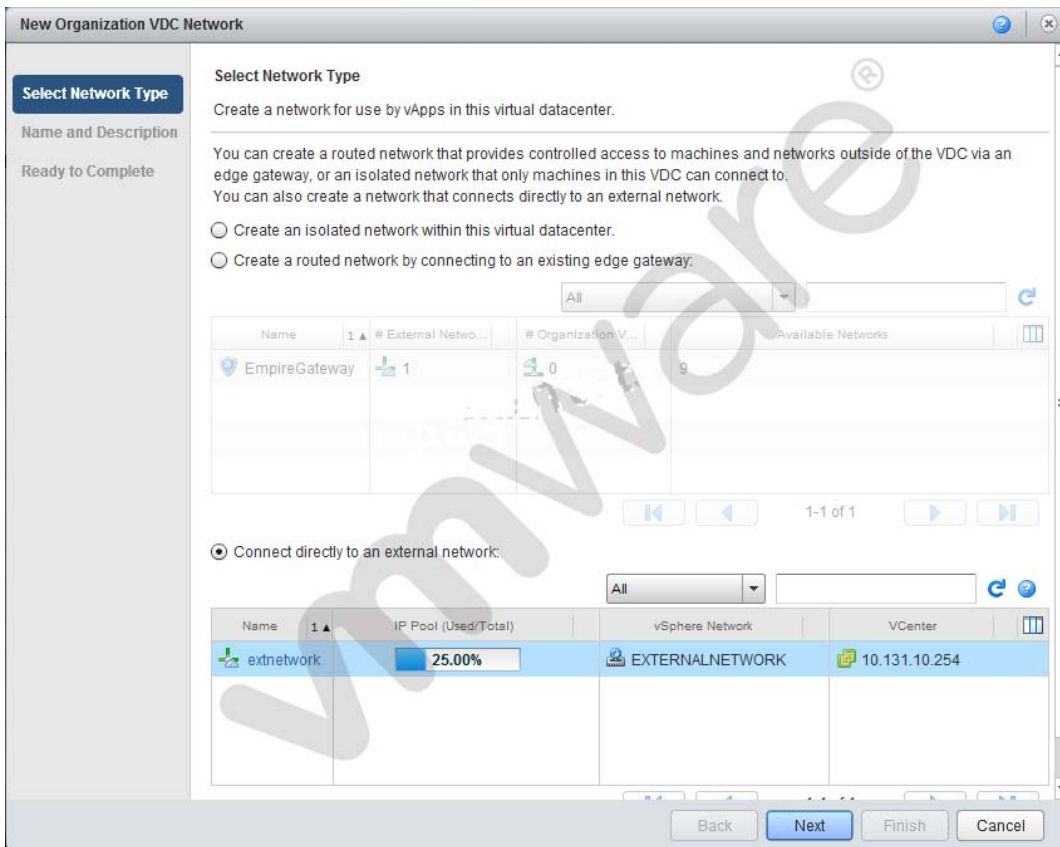
- A. The Storage Profile has not been created in vCenter.
- B. The Storage Profile has been named with more than 5 characters.
- C. The Storage Profile is set by the Org vDC wizard
- D. The Provider vDC combines all storage profiles into *(Any)

Answer: A

Explanation:

QUESTION NO: 3

-- Exhibit --



-- Exhibit --

Click the Exhibit button.

Which External Organization Network type is being created in the Organization Network Creation Wizard?

- A. External port group-backed
- B. External VLAN-backed
- C. External Direct
- D. External Routed

Answer: C

Explanation:

QUESTION NO: 4