

ISLEVER

VCP-511

VMware Certified Professional on vSphere 5
(Private Beta)

DEMO

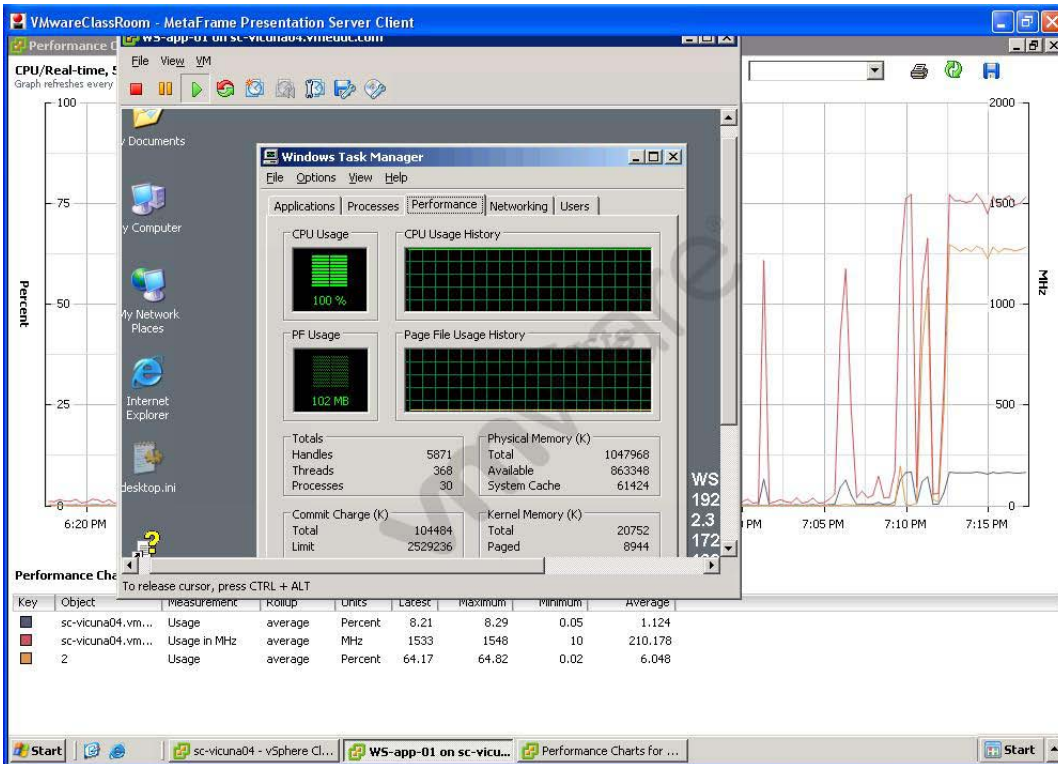
<https://www.islever.com/vcp-511.html>

<https://www.islever.com/vmware.html>

For the most up-to-date exam questions and materials, we recommend visiting our website, where you can access the latest content and resources.

QUESTION NO: 1

Click the Exhibit button.



An administrator has deployed a new virtual machine on an ESXi 5.x host. Users are complaining of poor performance on the application running on the virtual machine. Performance tools display the results shown in the exhibit.

Which two tasks might improve the user experience? (Choose two.)

- A. Add a vCPU to the virtual machine
- B. Remove CPU affinity on the advanced CPU setting of the virtual machine
- C. Migrate the virtual machine to another ESXi host
- D. Remove the limit on the CPU settings of the virtual machine

Answer: A,D

Explanation:

QUESTION NO: 2

An administrator notices that when a virtual machine is placed into a resource pool, a warning indicates that the virtual machine will receive a very large percentage of the total shares for memory.

Which action can be taken to resolve this problem?

- A. Increase the memory resource allocation to the resource pool.
- B. Increase the share value for the resource pool.
- C. Change the shares setting from custom to high, medium, or low for the virtual machine.
- D. Decrease the memory allocation for the virtual machine.

Answer: C

Explanation:

QUESTION NO: 3

An administrator views the Fault Tolerance pane of the Summary tab of a virtual machine and finds that the current status is Not Protected.

What are two vSphere Fault Tolerance states that would cause the virtual machine to not be protected? (Choose two.)

- A. Stopped - Fault Tolerance has been stopped on the secondary virtual machine.
- B. Need Secondary VM - The primary virtual machine is running without a secondary virtual machine and is not protected
- C. Need Primary VM - The secondary virtual machine is running, and a new primary virtual machine cannot be generated.
- D. Disabled - Fault Tolerance is disabled.

Answer: B,D

Explanation:

QUESTION NO: 4

Which two conditions prevent the application of a host profile to an ESXi 5.x host? (Choose two.)

- A. The host has multiple profiles attached.
- B. The host has not been placed into maintenance mode.
- C. The host is running virtual machines.
- D. The host is an ESXi host.

Answer: B,C

Explanation:

QUESTION NO: 5

An administrator is editing the IP allocation policy for a vApp.

Which three options are available? (Choose three.)

- A. Automatic
- B. Roaming
- C. Transient
- D. DHCP
- E. Fixed

Answer: C,D,E

Explanation:

QUESTION NO: 6

ACME Junkmail Incorporated has been utilizing templates in their environment. They are running a 10-node ESXi 5.x Cluster and DRS has not been configured. Several virtual machines have been deployed from this template and successfully powered on, but a newly deployed virtual machine will not power on. There appear to be adequate CPU and Memory resources available on the host.

Which three things can be done to allow more virtual machines to be deployed into the cluster from this template? (Choose three.)

- A. Select a different datastore for the virtual machine
- B. Move the swap file to a different location
- C. Deploy the virtual machine to a different host using the same datastore
- D. Enable DRS on the cluster to balance the virtual machine load out across hosts
- E. Increase the virtual machine memory reservation

Answer: A,B,E

Explanation:

QUESTION NO: 7

What are three valid objects to place in a vApp? (Choose three.)
