

ISLEVER

JN0-522

Juniper Networks Certified Internet Associate,
FWV (JNCIA-FWV)

DEMO

<https://www.islever.com/jn0-522.html>

<https://www.islever.com/juniper.html>

For the most up-to-date exam questions and materials, we recommend visiting our website, where you can access the latest content and resources.

Note: The answer is for reference only, you need to understand all question.

QUESTION 1

Address book entries identify hosts and networks by their location in relation to what?

- A. Network entries in the routing table
- B. A listing of addresses in the ARP table
- C. Security zones on the firewall
- D. An interface on the firewall

Answer: C

QUESTION 2

Which two options allow proper configuration of NAT-dst? (Choose two.)

- A. A static route to the appropriate subnet using a private interface as the outbound interface
- B. The default address book entry of "any" in the internal zone
- C. The default address book entry of "any" in the external zone
- D. An address book entry for the address to be translated in the internal zone

Answer: AD

QUESTION 3

Which three options allow proper configuration of NAT-dst? (Choose three.)

- A. The default address book entry of "any" in the external zone
- B. An address book entry for the address to be translated in the internal zone
- C. A static route to the appropriate subnet using a private interface as the outbound interface
- D. The default address book entry of "any" in the internal zone
- E. A secondary address on one of the interfaces in the internal zone

Answer: BCE

QUESTION 4

Which two protocols are defined in the IPSec standard? (Choose two.)

- A. ESP
- B. IKE

- C. GRE
- D. AH

Answer: AD

QUESTION 5

What is the purpose of the "Permitted IP" address on a ScreenOS device?

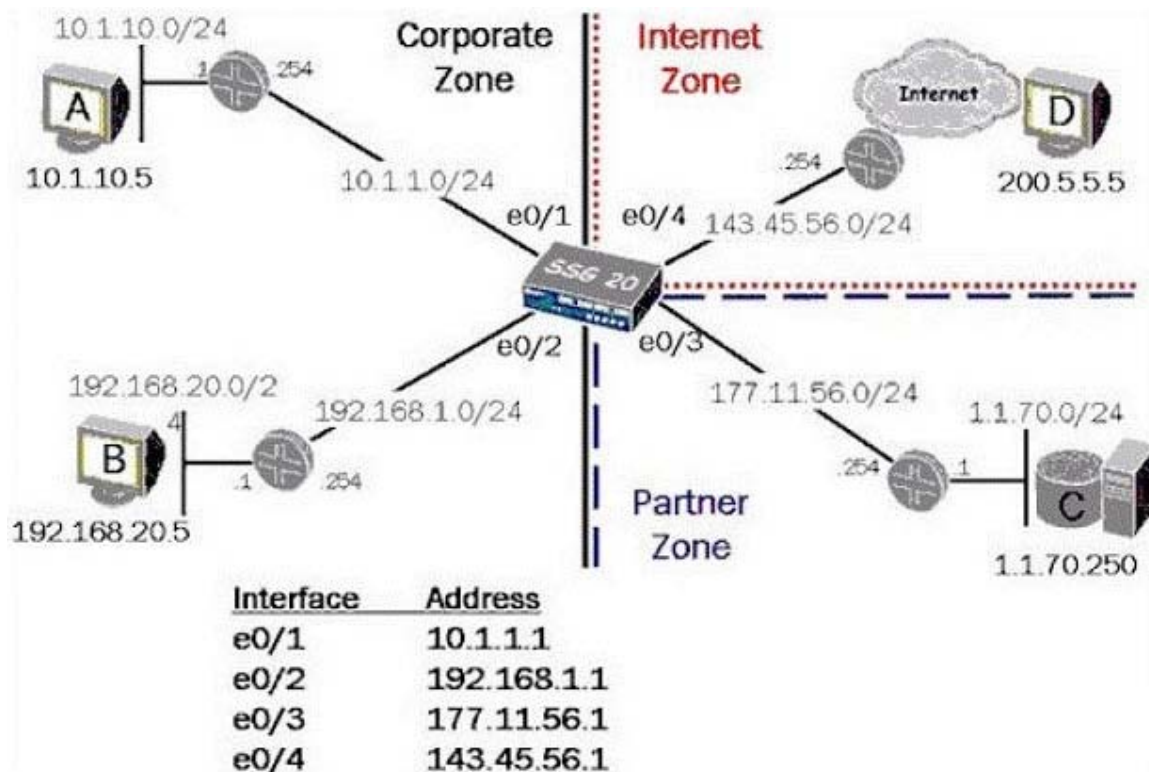
- A. It is used in policy rules to determine which user traffic is allowed through theScreenOS device
- B. It defines a list of addresses that are trusted to perform management on theScreenOS device
- C. It is the address that an external device uses to gain management access to aScreenOS device
- D. It defines which range of addresses that can access devices connected to theScreenOS device

Answer: B

QUESTION 6

See the exhibit:

Exhibit:



In the exhibit, which routing command would allow Host A to communicate with host C?

- A. Set route 0.0.0.0/0int e0/3 gateway 177.11.56.254
- B. Set route 1.1.70.0 interface e0/3 gateway 177.11.56.254
- C. Configure route 1.1.70.0/24 gateway 177.11.56.254int e0/3
- D. Set route 1.1.70.0/24 interface e0/3 gateway 177.11.56.254

Answer: D

QUESTION 7

What are two benefits of configuring a ScreenOS device in transparent mode? (Choose two.)

- A. Policies are easier to create since you do not have to include source and destination IP addresses
- B. There is no need to create MIPs or VIPs for incoming traffic to reach protected servers
- C. The product can support more VPNs and obtain greater throughput because there is less overhead to manage
- D. There is no need to reconfigure the IP addresses of routers or protected servers

Answer: BD

QUESTION 8

Which statement accurately describes the "config rollback" feature?

- A. Once the "Config rollback" feature is enabled, it allows the administrator to re-apply a previously saved configuration file from the flash
- B. Once the "Config rollback" feature is enabled, it allows the administrator to revert to the prior ScreenOS image or configuration file in event an upgrade operation aborts
- C. The "Config rollback" feature is enabled by default, it allows the administrator to re-reply a previously saved configuration file from flash
- D. Once the "Config rollback" feature is enabled, it allows the administrator to re-apply a locked configuration file from a separate area in flash

Answer: D

QUESTION 9

See the exhibit:

Exhibit: