

ISLEVER

E20-540

networked storage-nas specialist exam

DEMO

<https://www.islever.com/e20-540.html>

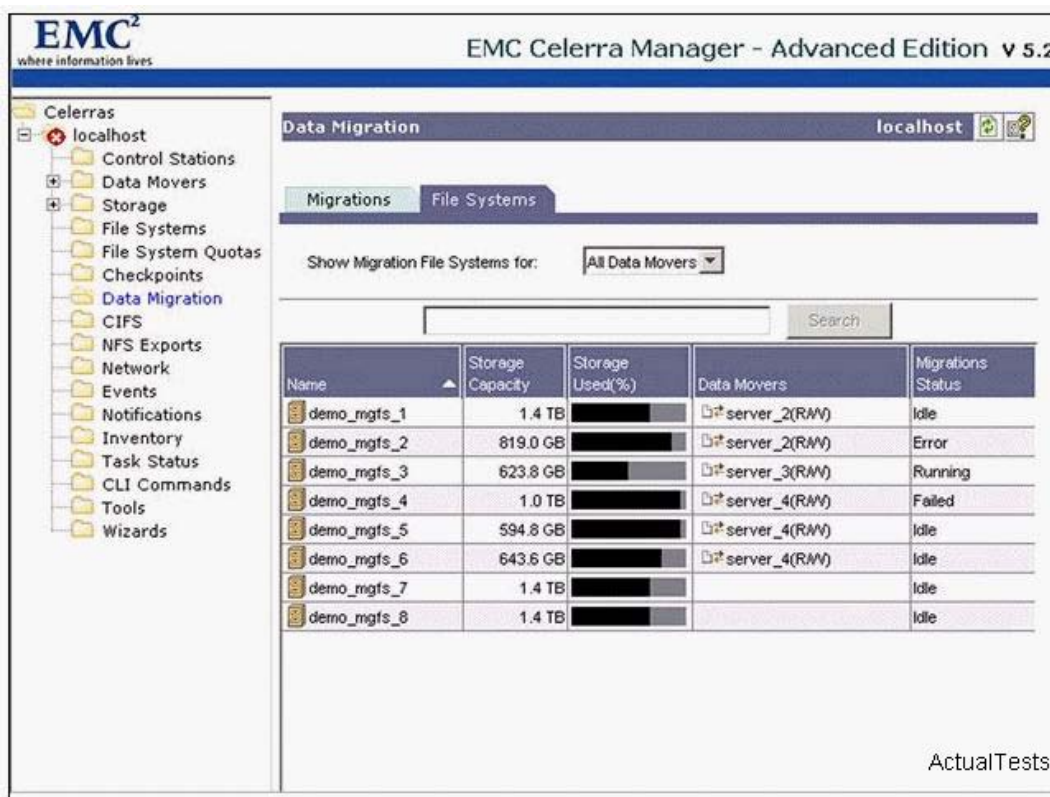
<https://www.islever.com/emc.html>

For the most up-to-date exam questions and materials, we recommend visiting our website, where you can access the latest content and resources.

QUESTION NO: 1

Click the Exhibit button.

Which "Data Migration" status is being monitored?



- A. SnapSure
- B. TimeFinder/FS
- C. CDMS
- D. SDMS

Answer: C

QUESTION NO: 2

What are two [2] characteristics of Internal Usermapper?

- A. no separate installation required
- B. coexisting with ExternalUsermapper is recommended
- C. runs on Control Station
- D. runs on Data Mover

Answer: A,D

QUESTION NO: 3

Which assigns the Fibre Channel WWN?

- A. System Administrator
- B. Operating system
- C. Hardware manufacturer
- D. Name server

Answer: C

QUESTION NO: 4

Which two [2] Celerra interfaces can be used to create automatically mounted checkpoints in NAS 5.2+?

- A. Manager
- B. Monitor
- C. CLI
- D. Native Manager

Answer: A,C

QUESTION NO: 5 DRAG DROP

Click the Task button.

Identify the Celerra components.

Identify the Celerra components.

The diagram shows a vertical rack of Celerra components. On the right, a list of component labels to be moved is provided: MUX Board, Comm Board, Power Supply, and Control Station 1. On the left and right sides of the rack, there are yellow boxes labeled "place here" with blue arrows pointing to the corresponding slots in the rack. The "place here" boxes are positioned at the top, middle, and bottom of the rack. The component labels are positioned to the right of the rack. A "Done" button is located at the bottom right of the diagram.

Answer:

Identify the Celerra components.

The diagram shows the same vertical rack of Celerra components. The component labels to be moved are now placed in the correct slots: Control Station 1 is in the top slot, Power Supply is in the middle slot, and MUX Board is in the bottom slot. The "place here" boxes are now empty. The component labels are positioned to the right of the rack. A "Done" button is located at the bottom right of the diagram.

QUESTION NO: 6

What are two [2] file system requirements?

A. the meta volume must be at least 2 MB to accommodate a file system