

ISLEVER

9L0-418

Mac Management Basics 10.9 Exam

DEMO

<https://www.islever.com/9l0-418.html>

<https://www.islever.com/apple.html>

For the most up-to-date exam questions and materials, we recommend visiting our website, where you can access the latest content and resources.

QUESTION NO: 1

You've set up a software update server. Which is a valid method of configuring client computers to retrieve updates from your server?

- A.** In the Sharing pane of System Preferences on the client computers, click Update Server, then select your server from the Update Servers list
- B.** Install a configuration profile with a Software Update payload specifying the URL of your software update server
- C.** Install an XML file in /Library/SoftwareUpdates/ on the client computers containing the IP address of your server
- D.** In the App Store app on the client computers, choose App Store > Preferences, click Updates, and select your server from the Update Servers list

Answer: B

Reference:<http://krypted.com/mac-security/using-the-software-update-service-on-mountain-lion-server/>

QUESTION NO: 2

When creating a network disk image that will be stored at the root of a volume, which action should you add to the workflow so that the network disk image can be used to start up a computer?

- A.** Define Image Source
- B.** Define NetRestore Source
- C.** Bless NetBoot Image Folder
- D.** Enable Automated Installation
- E.** Create Image

Answer: A

Reference:<http://support.apple.com/kb/PH9428>

QUESTION NO: 3

In OS X Server, which feature does the Software Update service provides, but the Caching service does NOT?

- A.** The caching of software updates from Apple

-
- B. The caching of software purchased from the Mac App Store
 - C. The ability to select which Apple software updates are available to managed client computers
 - D. The ability to deliver custom-built installation packages to client computers
 - E. The caching of books purchased through iTunes

Answer: C

Explanation:

QUESTION NO: 4

You used Terminal to configure an OS X computer to retrieve updates from PretendCo's internal software update server, but the server is no longer active. How would you point the client computer back to the Apple Software Update server to retrieve software updates?

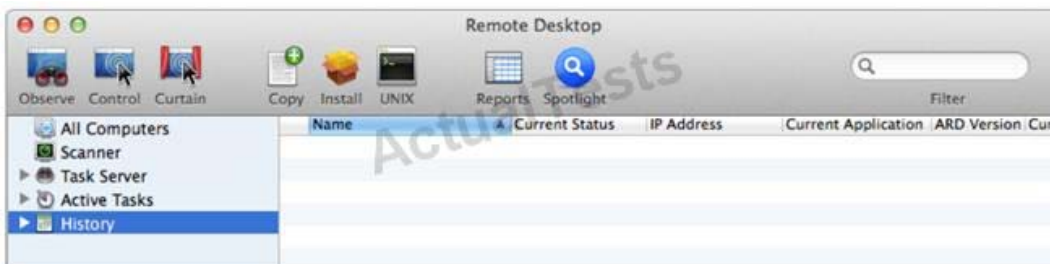
- A. In Terminal, type `sudo defaults delete /Library/Preferences/com.apple.SoftwareUpdate CatalogURL` and press Return
- B. In App Store preferences, click Reset Software Updates
- C. In Terminal, type `sudo defaults write /Library/Preferences/com.apple.SoftwareUpdate CatalogURL "http://updates.apple.com:8088/index.sucatalog"` and press Return
- D. In the General pane of System Preferences, click Reset Software Updates

Answer: C

Reference:<http://krypted.com/mac-security/using-the-software-update-service-on-mountain-lion-server/>

QUESTION NO: 5 HOTSPOT

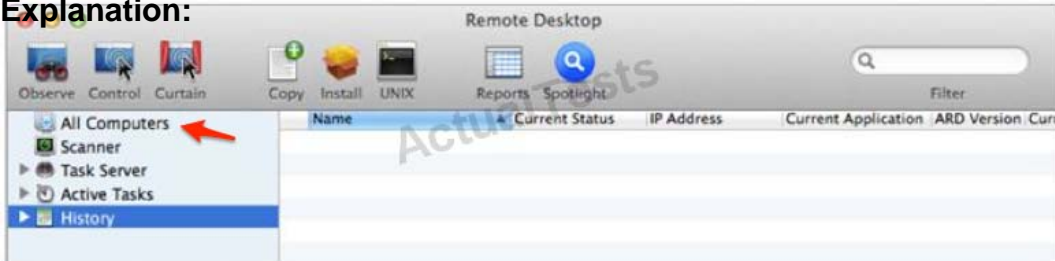
In the screenshot below, click where you would need to click to see a list of the OS X computers that Apple Remote Desktop is configured to manage.



Answer:



Explanation:



Reference:http://manuals.info.apple.com/MANUALS/0/MA339/en_US/ARD31_TO.pdf

QUESTION NO: 6

How can you configure an unmanaged OS X computer to retrieve software updates from a software update server at updates.pretendco.com?

- A. In Terminal, type `sudo defaults write com.pretendco.updatesSoftwareUpdates` and press Return
- B. In Software Update preferences, click the Advanced tab and enter "updates.pretendco.com" in the URL field
- C. In App Store preferences, click the Advanced tab and enter "updates.pretendco.com" in the Update Server field
- D. In Terminal, type `sudo defaultswrite/Library/Preferences/com.apple.SoftwareUpdateCatalogURL "http://updates.pretendco.com:8088/index.sucatalog"` and press Return

Answer: D

Explanation:

QUESTION NO: 7

Your Mac hasn't booted from a NetInstall server before. Which key(s) do you hold down during startup so that the computer boots from the default network boot image provided by a NetInstall server?