

ISLEVER

# 9L0-407

Mac Integration Basics 10.7 Exam

DEMO

<https://www.islever.com/9l0-407.html>

<https://www.islever.com/apple.html>

For the most up-to-date exam questions and materials, we recommend visiting our website, where you can access the latest content and resources.

Note: The answer is for reference only, you need to understand all question.

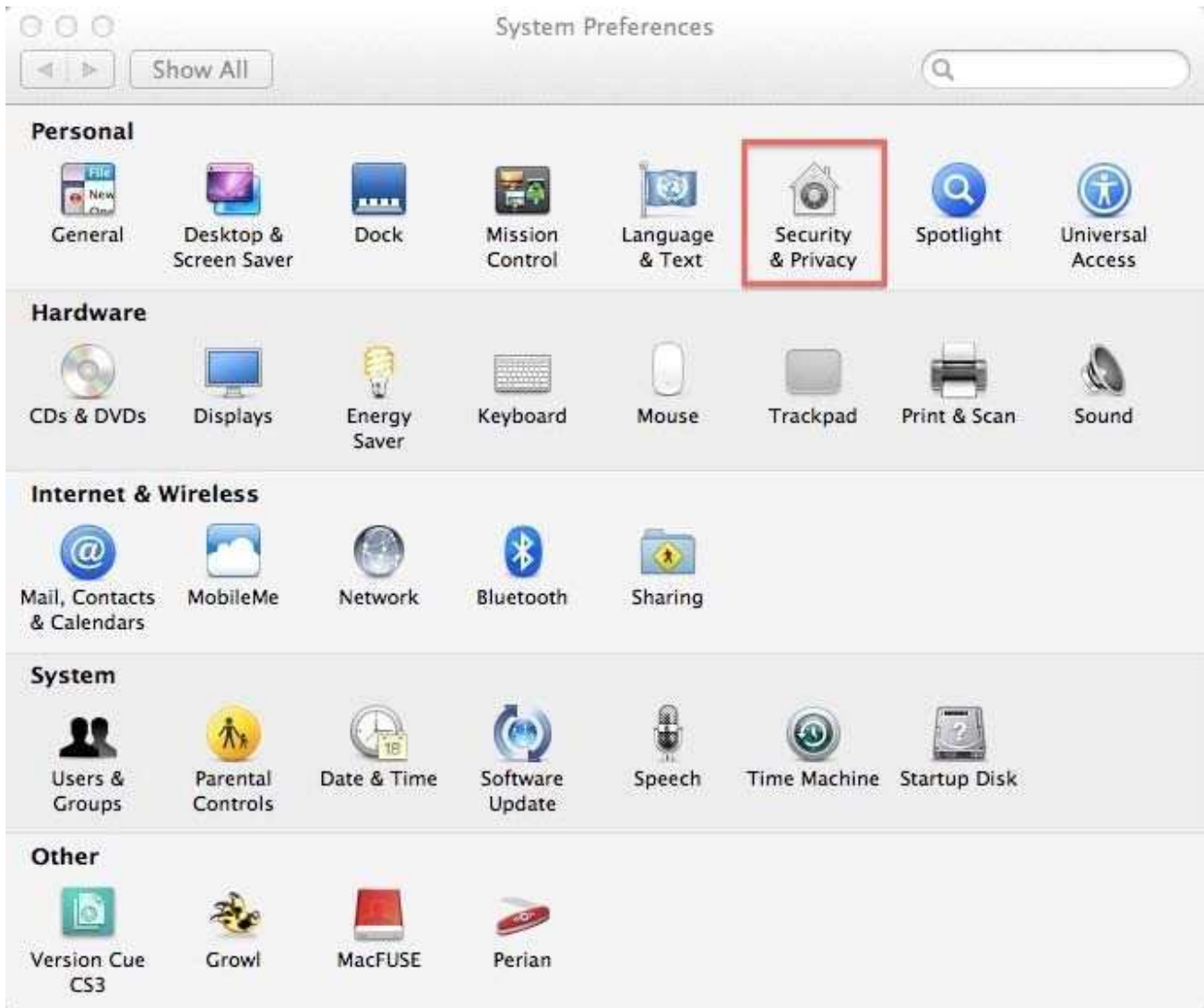
### QUESTION 1

#### HOTSPOT

In the screenshot, click the Icon of the preference pane where you turn on the OS X personal firewall.



Answer:



### Question 2

What Windows Server technology provides directory and authentication services?

- A. Exchange Directory
- B. LDAP Directory
- C. Active Directory
- D. Open Directory

**Answer: C**

### Question 3

From your Mac, you want to access mail, calendars, and contacts served by a Microsoft Exchange Server. What is the earliest version of Exchange Server for which Lion provides built-in support for this task?

- A. Microsoft Exchange Server 2003
- B. Microsoft Exchange Server 2007 with Service Pack 1 Update Rollup 4
- C. Microsoft Exchange Server 2003 with Service Pack 2
- D. Microsoft Exchange Server 2000 with Service Pack 4
- E. Microsoft Exchange Server 2010

**Answer: B**

#### Question 4

HOTSPOT

In the screenshot, click the icon of the preference pane where you configure a Mac to let Windows computers access files on the Mac using the SMB protocol.



**Answer:**