

ISLEVER

9L0-402

Support Essentials 10.5

DEMO

<https://www.islever.com/9l0-402.html>

<https://www.islever.com/apple.html>

For the most up-to-date exam questions and materials, we recommend visiting our website, where you can access the latest content and resources.

QUESTION NO: 1

Which of these can you use to determine whether there is network connectivity between your computer and a web server on the Internet?

- A. Whois
- B. Finger
- C. Lookup
- D. Traceroute

Answer: D

QUESTION NO: 2

You are an admin user, and have enabled the Ignore Volume Ownership option for an external FireWire hard disk. What will happen the next time a standard user attempts to mount the disk?

- A. The disk will mount, and the user will be able to read, modify, and delete any file on the disk.
- B. The disk will mount, and the user will be able to read any file on the disk; the user will be required to enter an administrator password to modify or delete files on the disk.
- C. The user will be required to enter an administrator password to mount the disk; once the disk is mounted the user will be able to read, modify, and delete any file on the disk.
- D. The user will be required to enter an administrator password to mount the disk; once the disk is mounted, the user will be able to read any file on the disk, but will be required to re-enter an administrator password to modify or delete files.

Answer: A

QUESTION NO: 3

Review the screenshot of a user's home folder, and then answer the question below.

Which folder did the user create?



- A. Music
- B. Pages
- C. Pictures
- D. Downloads

Answer: B

QUESTION NO: 4

Mac OS X v10.5 can read files on a volume that is _____-formatted, but it cannot write to files on the volume.

- A. UFS
- B. NTFS
- C. EXT2
- D. FAT32

Answer: B

QUESTION NO: 5

Which procedure will let someone who does not have a local user account log in to a local admin user account on a Mac OS X v10.5 computer that does NOT have a firmware password enabled?

- A. Log in to the computer with the user name "root" and the master password, open Accounts preferences, and reset the admin user password.
- B. Remove a RAM DIMM from one of the computers RAM slots, restart the computer while holding down the Command-Option-O-F keys until you hear the startup sound, then type "reset-all" at the prompt.
- C. Start the computer from the internal hard disk, log into a guest user account, open the Reset Password utility in the /Applications/Utilities folder, then reset the password on the admin

user account that resides on the hard disk volume.

D. Press the C key while restarting the computer with the Mac OS X v10.5 Install DVD inserted, then choose Reset Password from the Utilities menu. Select the hard disk volume and the admin user account, then enter a new password for the account and click Save.

Answer: D

QUESTION NO: 6

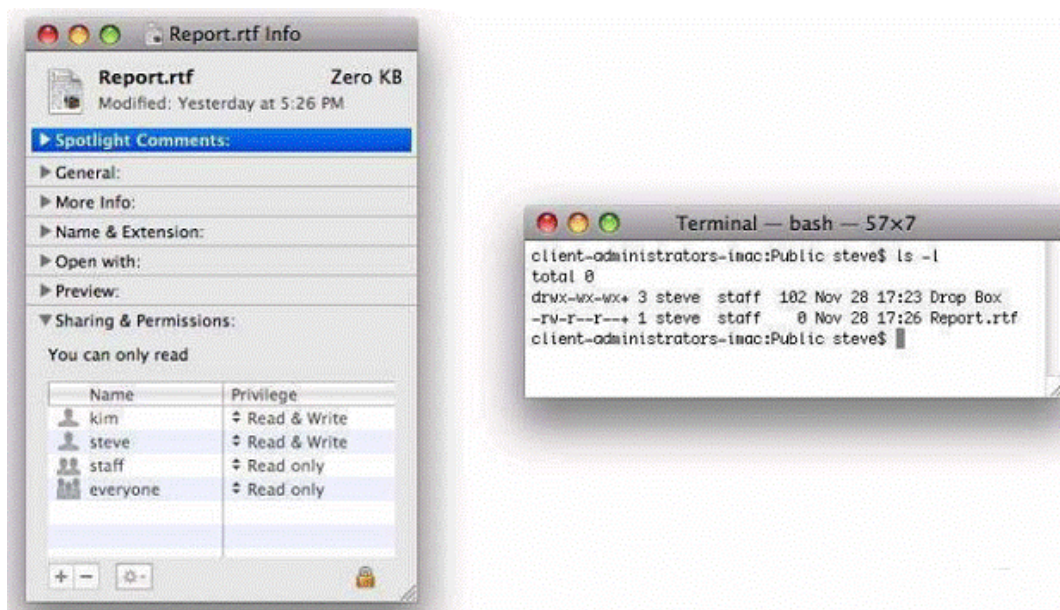
You have configured your Mac OS X v10.5 computer to share its connected USB printer. Mac OS X users can locate and print to it, but Windows users can not. What additional step must you take to allow Windows users to print to it?

- A. In Sharing preferences, enable file sharing over SMB.
- B. In Print & Fax preferences, enable the SMB printer driver.
- C. In Printer Setup Utility, enable Windows Printing from the Printers menu.
- D. In Print & Fax preferences, configure the Windows Printer name and queue.

Answer: A

QUESTION NO: 7

Review the screenshots of a files permissions, as seen in Finder and from Terminal, and then answer the question below. Why are Kim's permissions to the file, Report.rtf, NOT visible in the Terminal listing?



- A. Kim's permissions are stored as POSIX settings.
- B. Kim's permissions are stored in the volume catalog.