

ISLEVER

9A0-044

Adobe Photoshop CS 2 ACE Exam

DEMO

<https://www.islever.com/9a0-044.html>

<https://www.islever.com/adobe.html>

For the most up-to-date exam questions and materials, we recommend visiting our website, where you can access the latest content and resources.

QUESTION NO: 1

You create an image with square pixels that you want to preview on a standard NTSC 4:3 monitor. When you activate the Video Preview feature, Photoshop warns you that the document pixel settings do not match the device settings. What should you do to get an accurate preview?

- A. deselect Apply Pixel Ratio to Preview
- B. select Do Not Scale
- C. select Apply Pixel Ratio to Preview
- D. select Scale to Fit in Frame

Answer: C

QUESTION NO: 2

You want to create several vector shapes on the same layer. You want the shapes to mask one another where they overlap. Which Vector tool option should you select?

- A. Intersect Shape Areas
- B. Add to Shape Area
- C. Exclude Overlapping Shape Areas
- D. Subtract from Shape Area

Answer: C

QUESTION NO: 3

Which filter command should you use to remove JPEG artifacts from an image?

- A. Blur > Smart Blur
- B. Blur > Surface Blur
- C. Noise > Add Noise
- D. Noise > Reduce Noise

Answer: D

QUESTION NO: 4

You save a selection by choosing Select > Save Selection. How is the selection saved?

- A. as a layer mask
- B. as a style

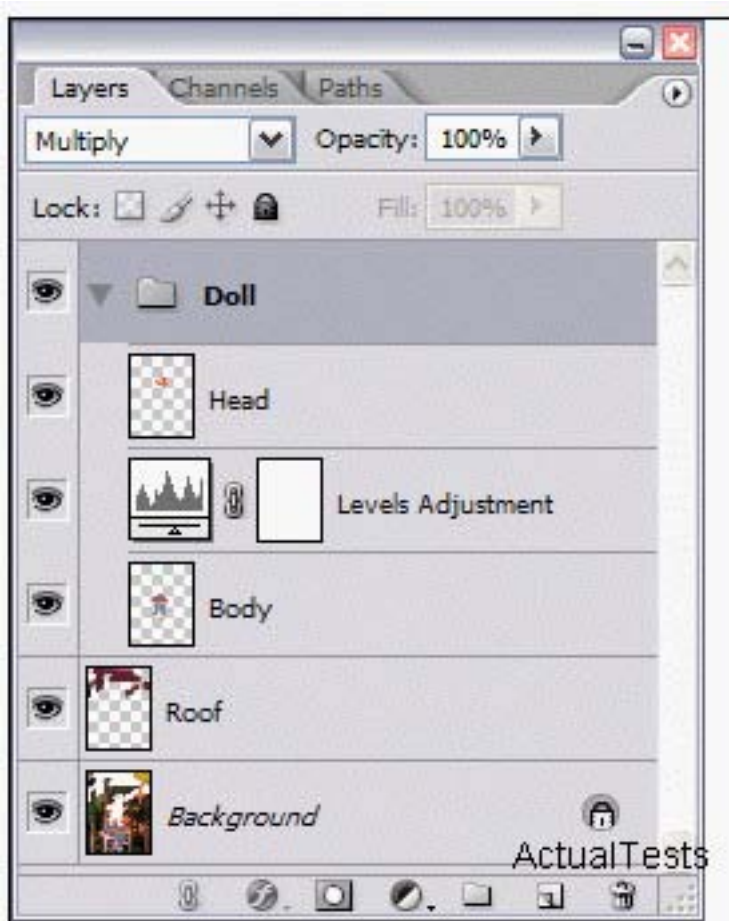
- C. as a layer
- D. as a channel

Answer: D

QUESTION NO: 5

Click the Exhibit button.

Which statement is true about the layers shown in the exhibit?



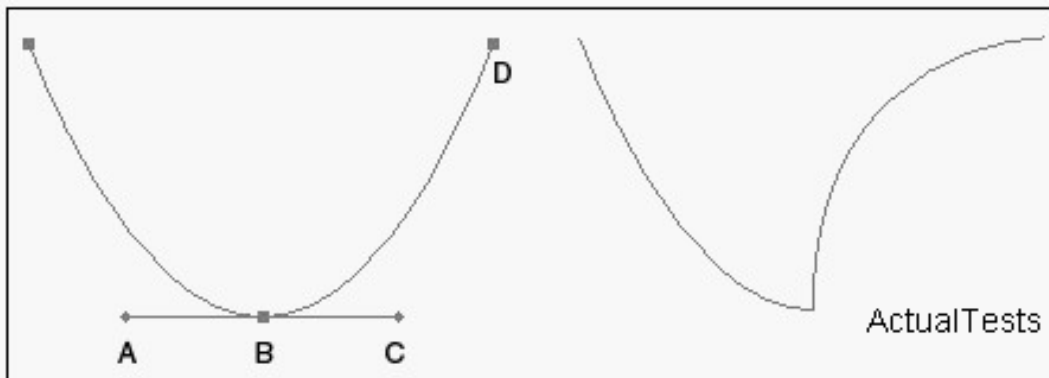
- A. The Levels Adjustment layer applies to the Head and Body layers.
- B. The Levels Adjustment layer applies to the Body layer.
- C. The Levels Adjustment layer applies to the Body and Roof layers.
- D. The Levels Adjustment layer applies to the Body, Roof, and Background layers.

Answer: B

QUESTION NO: 6

Click the Exhibit button.

What should you do to modify the first path shown in the exhibit so that it matches the second path?



- A. use the Direct Selection tool and drag direction point A up and to the right
- B. use the Direct Selection tool and drag anchor point D to the left
- C. use the Convert Point tool and drag direction point C up and to the left
- D. use the Convert Point tool and click on point B

Answer: C

QUESTION NO: 7

You have a full color photograph with many different colors. Which file format should you use when optimizing this image for the web?

- A. SVG
- B. TIFF
- C. JPEG
- D. GIF

Answer: C

QUESTION NO: 8

Which filter command should you use to remove JPEG artifacts from an image?

- A. Noise > Add Noise
- B. Blur > Surface Blur
- C. Blur > Smart Blur
- D. Noise > Reduce Noise

Answer: D