

ISLEVER

920-533

Carrier VoIP - Communication Server 2000 -
Compact

DEMO

<https://www.islever.com/920-533.html>

<https://www.islever.com/nortel.html>

For the most up-to-date exam questions and materials, we recommend visiting our website, where you can access the latest content and resources.

QUESTION NO: 1

In a Carrier VoIP network, what are the two primary functions of the Integrated Element Management System? (Choose two.)

- A. It provides a functional umbrella to manage performance, faults, and security.
- B. It manages connectivity between the Packet Switched Network and TDM trunks.
- C. It manages a message switching function between elements in an SS7 network.
- D. It provides a central launch point to element managers that manage VoIP networks.

Answer: A,D

QUESTION NO: 2

In a Carrier VoIP network, which two statements about the STORage Management Integrated Array (STORM-IA) units are true? (Choose two.)

- A. The STORM IA unit participates in call processing.
- B. The STORM-IA unit uses the Network File System services.
- C. The STORM-IA unit operates in a high availability cluster configuration.
- D. The STORM-IA unit provides redundancy for application software and data that is stored on its disk drives.

Answer: B,D

QUESTION NO: 3

In a Carrier VoIP network, what is the primary function of the USP Manager?

- A. Manages all Universal Access VoIP network components.
- B. Manages the Universal Switch Provisioning Network Element.
- C. Manages the OAM&P activities for the Universal Signaling Point component.
- D. Manages the Universal Access VoIP signaling and performance Network Element.

Answer: C

QUESTION NO: 4

Which circuit provides connectivity between legacy equipment (i.e., MS) and the CS2000 compact in the Carrier VoIP hybrid solution?

- A. Call Agent

-
- B. TDM Controller
 - C. Shelf Controller
 - D. Message Controller

Answer: D

QUESTION NO: 5

In a Carrier VoIP network, which occurs in the event of a complete failure of an active Storage Management Integrated Array (STORM-IA) unit?

- A. The call agent will have access to the remaining operational STORM-IA unit.
- B. The Call Agent will store the data until the failed STORM-IA unit is corrected.
- C. The inactive STORM-IA unit will detect the failure and take over as the active unit.
- D. The call agent will have access to the remaining operational STORM-IA unit, only after NFS mounts are re-established.

Answer: A

QUESTION NO: 6

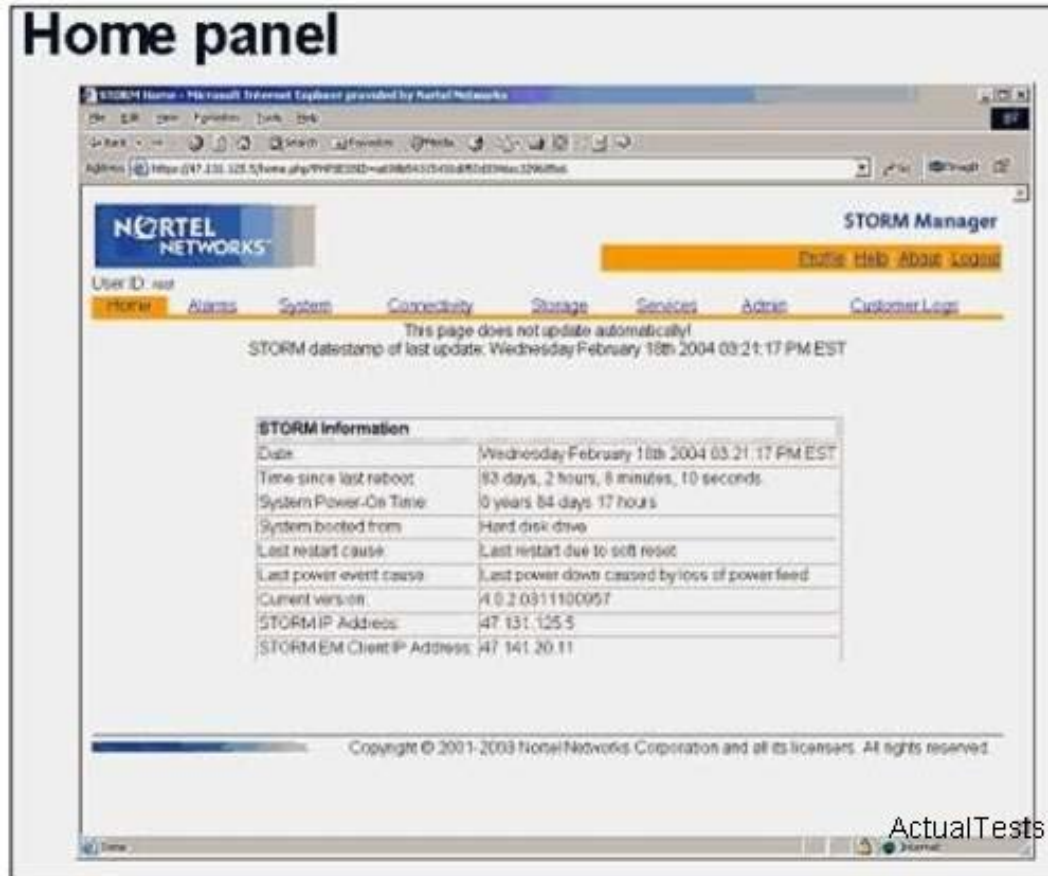
Which two cards are part of a Greenfield system configuration? (Choose two.)

- A. the Call Agent
- B. the shelf Agent
- C. the shelf controller
- D. the Message Controller

Answer: A,C

QUESTION NO: 7

In the STORM MANAGER,



In which panel is the NTP server configured?

- A. the Admin Panel
- B. the System Panel
- C. the Services Panel
- D. the Connectivity Panel

Answer: C

QUESTION NO: 8

In the STORM MANAGER,