

ISLEVER

70-680

Windows 7, Configuring

DEMO

<https://www.islever.com/70-680.html>

<https://www.islever.com/microsoft.html>

For the most up-to-date exam questions and materials, we recommend visiting our website, where you can access the latest content and resources.

Note: The answer is for reference only, you need to understand all question.

QUESTION 1

Your network consists of an Active Directory domain and a DirectAccess infrastructure.

You install Windows 7 on a new portable computer and join the computer to the domain.

You need to ensure that the computer can establish DirectAccess connections.

What should you do?

- A. Install a computer certificate.
- B. Create a new network connection.
- C. Enable the Network Discovery firewall exception.
- D. Add the computer account to the Network Configuration Operators group.

Answer: A

Question 2

You have a portable computer named Computer1 that runs Windows 7.

You have a file server named Server1 that runs Windows Server 2008. Server1 contains a shared folder named Share1.

You need to configure Computer1 to meet the following requirements:

- Ensure that cached files from Share1 are encrypted.
- Ensure that files located in Share1 are available when Server1 is disconnected from the network.

What should you do?

- A. On Server1, encrypt the files in Share1. On Computer1, make Share1 available offline.
- B. On Server1, configure BitLocker Drive Encryption. On Computer1, make Share1 available offline.
- C. On Computer1, make Share1 available offline and enable encryption of offline files.
- D. On Computer1, copy the files from Share1 to the Documents library and configure BitLocker Drive Encryption.

Answer: C

Question 3

You have a computer named Computer1 that runs Windows Vista and a computer named Computer2 that runs Windows 7. You plan to migrate all profiles and user files from Computer1 to Computer2.

You need to identify how much space is required to complete the migration.

What should you do?

- A. On Computer1 run Loadstate c:\store /nocompress
- B. On Computer1 run Scanstate c:\store /nocompress /p
- C. On Computer2 run Loadstate \\computer1\store /nocompress
- D. On Computer2 run Scanstate \\computer1\store /nocompress /p

Answer: B

Question 4

You work in an international company which is named Wiikigo. Before entering this company, you have two years of experience in the IT field, as well as experience implementing and administering any Windows client operating system in a networked environment. You are professional in installing, upgrading and migrating to Windows 7, deploying Windows 7, and configuring Hardware and Applications and son on. You have a workgroup which contains five computers. Windows 7 is run by the computers. A computer named C01 has video and audio files. You have to share C01s video and audio files on the network. What should you do?

(Choose more than one)

- A. Connect a removable drive and enable BitLocker To Go.
- B. A HomeGroup should be created.
- C. The files should be moved to a Media Library.
- D. All BranchCache rules should be enabled in Windows Firewall.

Answer: BC

Question 5

You work in an international company which is named Wiikigo. Before entering this company, you have two years of experience in the IT field, as well as experience implementing and administering any Windows client operating system in a networked environment. You are professional in installing, upgrading and migrating to Windows 7, deploying Windows 7, and configuring Hardware and Applications and son on. You manage a computer that runs Windows 7. You have to identify which applications were installed during the last week. So what action should you perform?

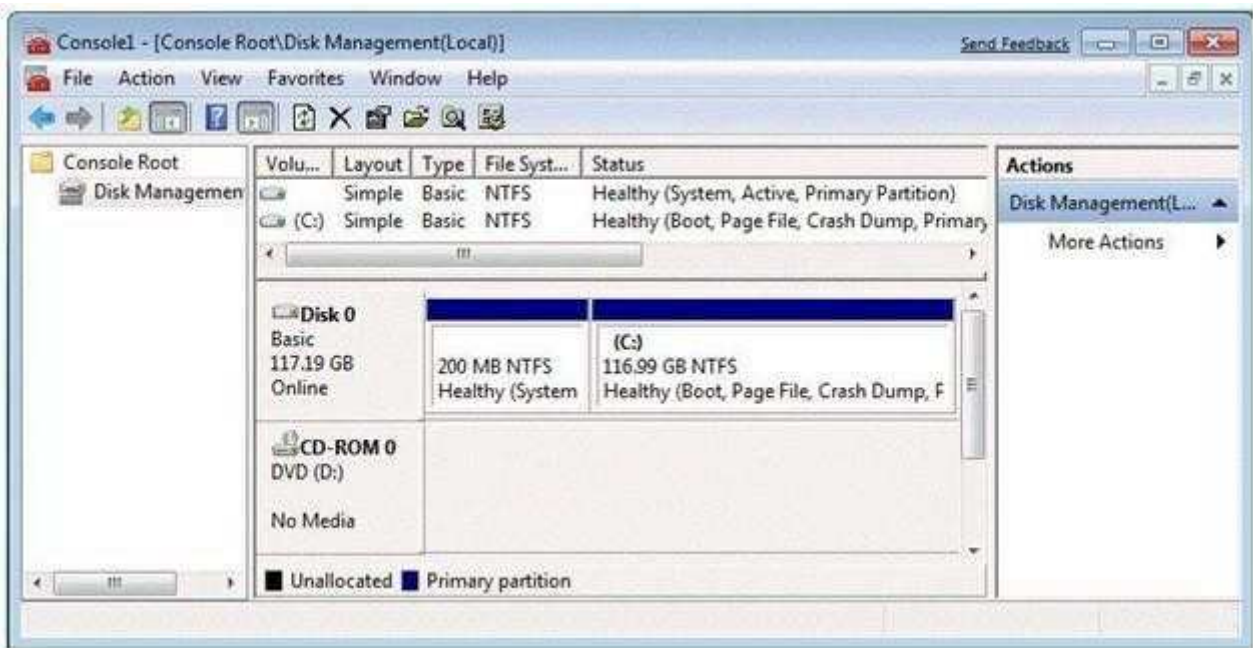
- A. The System Performance Data Collector Set should be run from Performance Monitor.

- B. The informational events should be reviewed from Reliability Monitor.
- C. The Software Environment should be reviewed from System Information.
- D. The System Diagnostics Report should be reviewed from Performance Monitor.

Answer: B

Question 6

You have a computer that runs Windows 7. You open the Disk Management snap-in as shown in the exhibit. (Click the Exhibit button.)?



You need to ensure that you can create a new partition on Disk 0.

What should you do?

- A. Shrink volume C.
- B. Compress volume C.
- C. Convert Disk 0 into a dynamic disk.
- D. Create and initialize a Virtual Hard Disk (VHD).

Answer: A

Question 7

Your network consists of one Active Directory domain. You have two computers named Computer1 and Computer2 that run Windows 7. Both computers are members of the domain.