

# 70-463

Implementing a Data Warehouse with  
Microsoft SQL Server 2012

DEMO

<https://www.islever.com/70-463.html>

<https://www.islever.com/microsoft.html>

For the most up-to-date exam questions and materials, we recommend visiting our website, where you can access the latest content and resources.

Note: The answer is for reference only, you need to understand all question.

## QUESTION 1

**DRAG DROP** You are designing a SQL Server Integration Services (SSIS) package. The package moves order-related data to a staging table named Order. Every night the staging data is truncated and then all the recent orders from the online store database are inserted into the staging table. Your package must meet the following requirements:

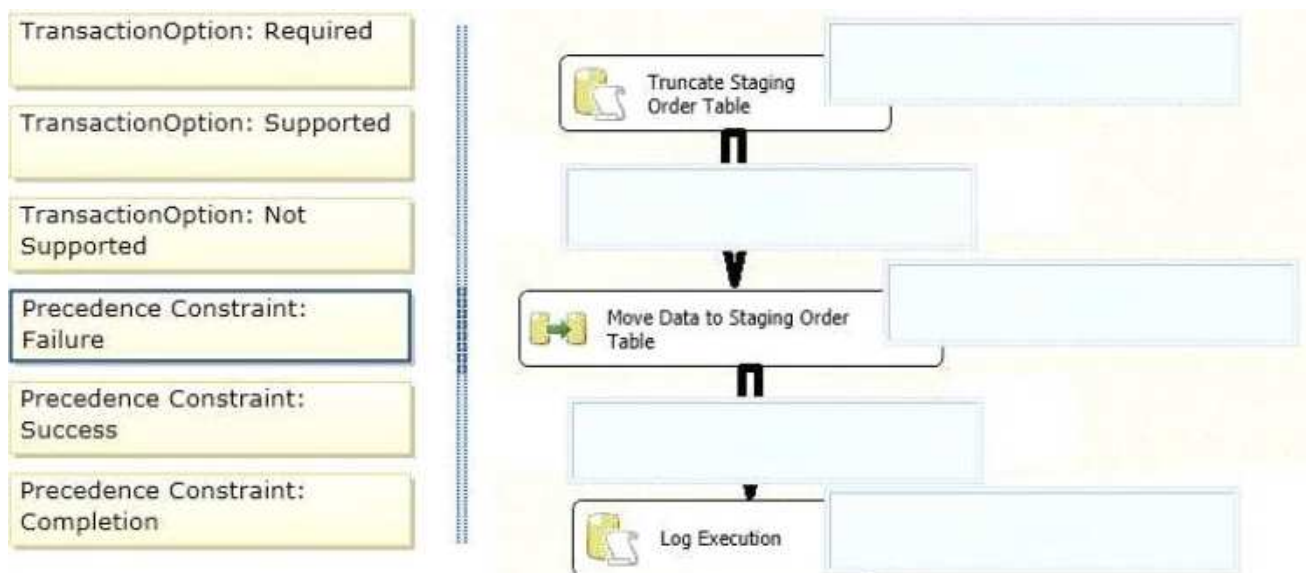
- If the truncate operation fails, the package execution must stop and report an error.

If the Data Flow task that moves the data to the staging table fails, the entire refresh operation must be rolled back.

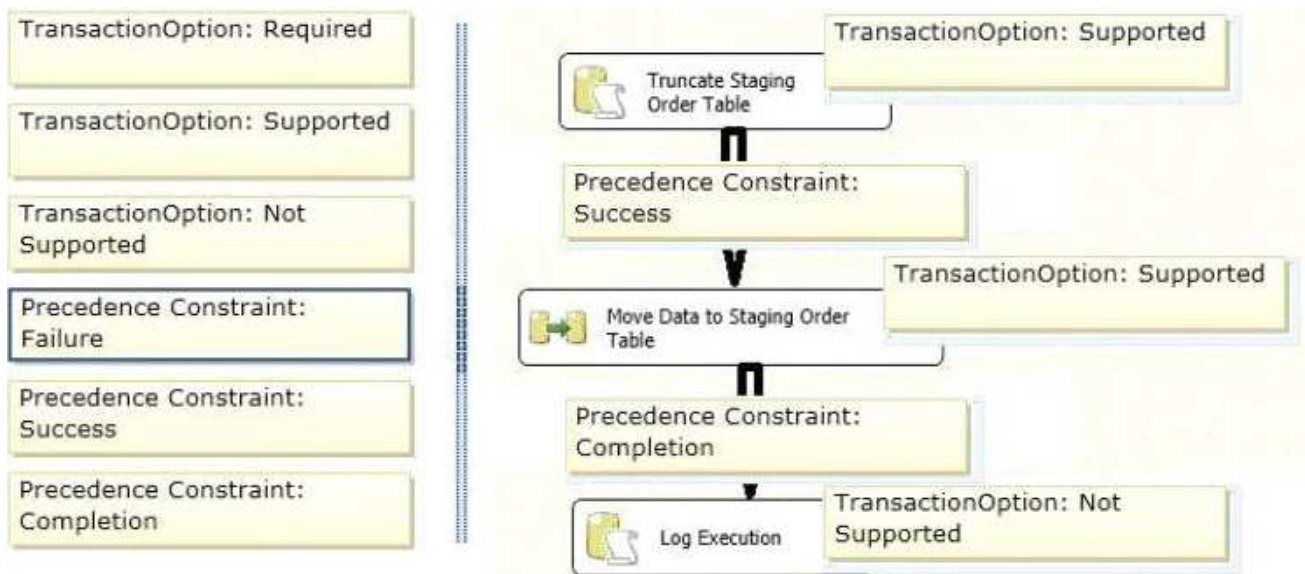
For auditing purposes, a log entry must be entered in a SQL log table after each execution of the Data Flow task.

The TransactionOption property for the package is set to Required. You need to design the package to meet the requirements. How should you design the control flow for the package? (To answer, drag the appropriate setting from the list of settings to the correct location or locations in the answer area.)

Select and Place:



**Answer:**



## QUESTION 2

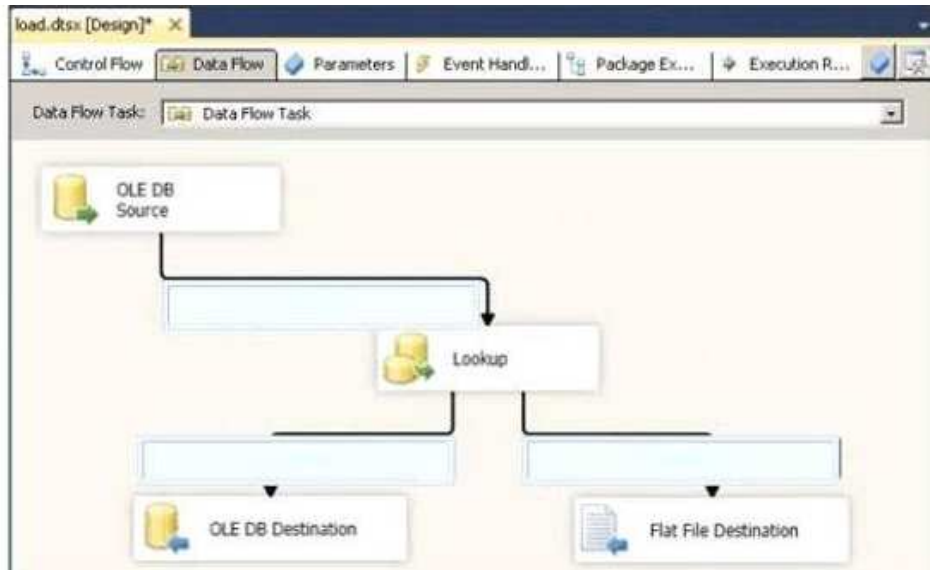
**DRAG AND DROP** You are developing a SQL Server Integration Services (SSIS) package to insert new data into a data mart. The package uses a Lookup transformation to find matches between the source and destination. The data flow has the following requirements:

- New rows must be inserted.
- Lookup failures must be written to a flat file.

In the Lookup transformation, the setting for rows with no matching entries is set to Redirect rows to no match output. You need to configure the package to direct data into the correct destinations. How should you design the data flow outputs? (To answer, drag the appropriate transformation from the list of answer options to the correct location in the answer area.)

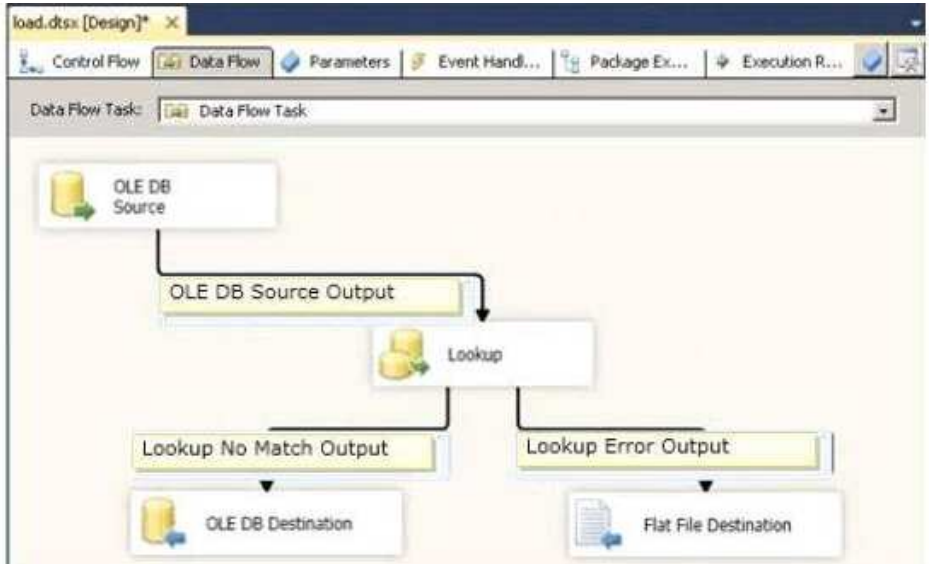
Select and Place:

- Lookup Error Output
- OLE DB Error Output
- Lookup Match Output
- OLE DB Source Output
- Lookup No Match Output



**Answer:**

- Lookup Error Output
- OLE DB Error Output
- Lookup Match Output
- OLE DB Source Output
- Lookup No Match Output



### QUESTION 3

You are building a SQL Server Integration Services (SSIS) package to load product data sourced from a SQL Azure database to a data warehouse. Before the product data is loaded, you create a batch record by using an Execute SQL task named Create Batch. After successfully loading the product data, you use another Execute SQL task named Set Batch Success to mark the batch as successful.