

70-460

MCITP: Business Intelligence Developer 2008
to MCSE: Business Intelligence

DEMO

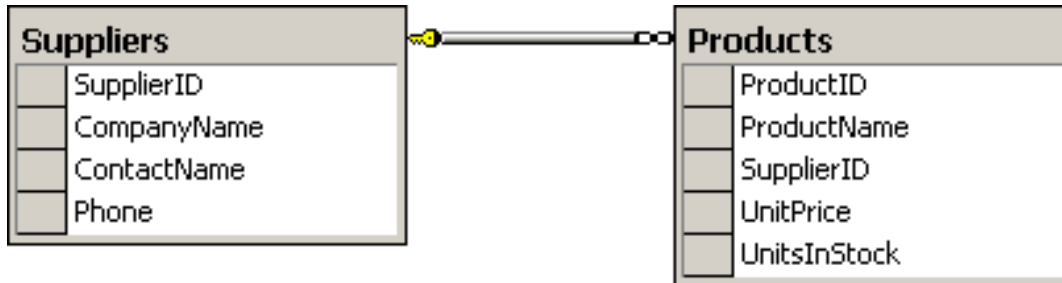
<https://www.islever.com/70-460.html>

<https://www.islever.com/microsoft.html>

For the most up-to-date exam questions and materials, we recommend visiting our website, where you can access the latest content and resources.

QUESTION NO: 1

You work as a database administrator at ABC.com. ABC.com has a SQL Server 2012 database named ProductsDB. The relevant part of the ProductsDB is shown in the following database diagram:



You need to write a Transact-SQL query that display a single row in the following XML format:

```
<row ProductID="1001" Product="Product Name", Price="24.99" InStock="16"
Supplier="Company Name" Contact="Contact Name" Phone="346 959 2215" />
```

Which of the following SELECT statement would you write?

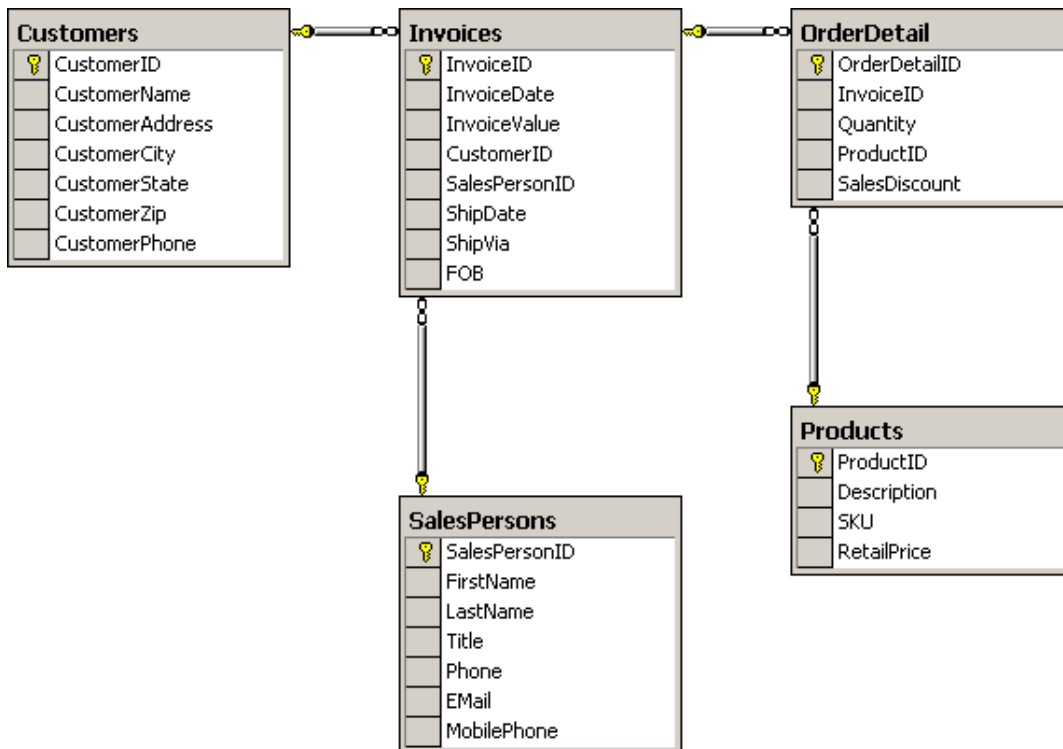
- A.** SELECT ProductID, ProductName AS [Product], UnitPrice AS [Price], UnitsInStock AS [InStock], CompanyName AS [Supplier], ContactName AS [Contact], Phone
FROM Products
INNER JOIN Suppliers ON SupplierID = SupplierID
WHERE ProductID = 1001
FOR XML RAW
- B.** SELECT ProductID, ProductName AS [Product], UnitPrice AS [Price], UnitsInStock AS [InStock], CompanyName AS [Supplier], ContactName AS [Contact], Phone
FROM Products
INNER JOIN Suppliers ON SupplierID = SupplierID
WHERE ProductID = 1001
FOR XML
- C.** SELECT ProductID, ProductName AS [Product], UnitPrice AS [Price], UnitsInStock AS [InStock], CompanyName AS [Supplier], ContactName AS [Contact], Phone
FROM Products
INNER JOIN Suppliers ON SupplierID = SupplierID
WHERE ProductID = 1001
FOR XML AUTO
- D.** SELECT ProductID, ProductName AS [Product], UnitPrice AS [Price], UnitsInStock AS [InStock], CompanyName AS [Supplier], ContactName AS [Contact], Phone
FROM Products
INNER JOIN Suppliers ON SupplierID = SupplierID
WHERE ProductID = 1001

Answer: A

Explanation:

QUESTION NO: 2

You work as a database administrator at ABC.com. ABC.com has a SQL Server 2012 database named SalesDB. The SalesDB is shown in the following database diagram:



You need to write a Transact-SQL query that display a single row in the following XML format:

```
<Invoices InvoiceID="1001" Date="2012-10-01T00:00:00", Value="1000.00" Customer="Customer Name" ShippedTo="Customer City" />
```

Which of the following SELECT statement would you write?

A. SELECT in.InvoiceID, in.InvoiceDate AS [Date], in.InvoiceValue AS [Value], cu.CustomerName AS [Name], cu.CustomerCity AS [ShippedTo] FROM Invoices AS in INNER JOIN Customers AS cu ON in.CustomerID = cu.CustomerID WHERE cu.CustomerID = 1001 FOR XML RAW

B. SELECT InvoiceID, InvoiceDate AS [Date], InvoiceValue AS [Value], CustomerName AS [Name], CustomerCity AS [ShippedTo] FROM Invoices

```
INNER JOIN Customers ON Invoices.CustomerID = Customers.CustomerID
WHERE Customers.CustomerID = 1001
FOR XML
```

```
C. SELECT Invoices.InvoiceID, Invoices.InvoiceDate AS [Date], Invoices.InvoiceValue AS [Value],
Customers.CustomerName AS [Name], Customers.CustomerCity AS [ShippedTo] FROM Invoices
INNER JOIN Customers ON Invoices.CustomerID = Customers.CustomerID
WHERE Customers.CustomerID = 1001
FOR XML AUTO
```

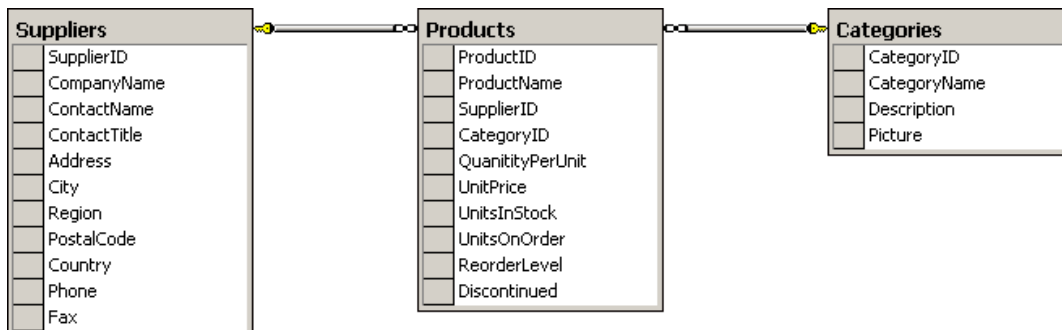
```
D. SELECT InvoiceID, InvoiceDate AS [Date], InvoiceValue AS [Value], CustomerName AS
[Name], CustomerCity AS [ShippedTo] FROM Invoices
INNER JOIN Customers ON Invoices.CustomerID = Customers.CustomerID
WHERE Customers.CustomerID = 1001
FOR XML AUTO, RAW
```

Answer: C

Explanation:

QUESTION NO: 3

You work as a database administrator at ABC.com. ABC.com has a SQL Server 2012 database named ProductsDB. The ProductsDB database is shown in the following database diagram:



You need to write a Transact-SQL query that displays all the products received by a single supplier in the following XML format:

```
<Suppliers SupplierID="22" Company="Company Name" ContactNumber="510 250 6400">
<Products ProductID="100" UnitPrice="249.00" UnitsInStock="7" />
<Products ProductID="118" UnitPrice="559.00" UnitsInStock="12" />
</Suppliers>
```

Which of the following SELECT statement would you write?