

ISLEVER

# 70-290

Managing and Maintaining a Microsoft  
Windows Server 2003 Environment

DEMO

<https://www.islever.com/70-290.html>

<https://www.islever.com/microsoft.html>

For the most up-to-date exam questions and materials, we recommend visiting our website, where you can access the latest content and resources.

Note: The answer is for reference only, you need to understand all question.

## Exam A

### QUESTION 1

You are a network administrator for your company. The network consists of a single Active Directory domain.

A user named Mary works in the information technology (IT) security department. Mary is a member of the ITSecurity global group.

Mary reports that no one in the ITSecurity global group can access the security log from the console of a computer named Server1.

You need to grant the ITSecurity global group the minimum rights necessary to view the security log on Server1.

How should you modify the local security policy?

- A. Assign the Generate security audits user right to the ITSecurity global group.
- B. Assign the Manage auditing and security logs user right to the ITSecurity global group.
- C. Assign the Allow logon through Terminal Services user right to the ITSecurity global group.
- D. Assign the Act as part of the operating system user right to the ITSecurity global group.

**Answer: B**

### QUESTION 2

You are the domain administrator for your company's Active Directory domain. All client computers run Windows 2000 Professional.

You recently deployed 10 new servers that run Windows Server 2003. You placed the servers in a new organizational unit (OU) named W2K3Servers.

Anne is another network administrator.

You need to configure the appropriate permissions to allow Anne to manage the new servers by using Terminal Services from her client computer. You need to assign Anne only the permissions she needs to perform her job.

What should you do?

- A. Add Anne's user account to the local Power Users group on each server that runs Windows Server 2003.

- B. Add Anne's user account to the Remote Desktop Users group on each server that runs Windows Server 2003.
- C. Assign Anne's user account the Allow Read and the Allow Write permissions for the W2K3Servers OU.
- D. Configure the Managed By property for the W2K3Servers OU to Anne's user account.

**Answer: B**

### **QUESTION 3**

You are a network administrator for your company. All servers run Windows Server 2003. You manage a server that functions as a file server.

The data volume on the server is mirrored. Each physical disk is on a separate controller. One of the hard disks that contains the data volume fails.

You discover that the failure was caused by a faulty SCSI controller. You replace the SCSI controller.

You need to restore the data volume to its previous state. You need to achieve this goal by using the minimum amount of administrative effort.

What should you do?

- A. Run the diskpart active command to activate the failed volume.
- B. Convert both disks to basic disks, and then restore the data.
- C. Break the mirror, and then re create the mirror.
- D. Select a disk in the mirror, and then reactivate the volume.

**Answer: D**

### **QUESTION 4**

You are the network administrator for your company. The network consists of a single Active Directory domain. All network servers run Windows Server 2003.

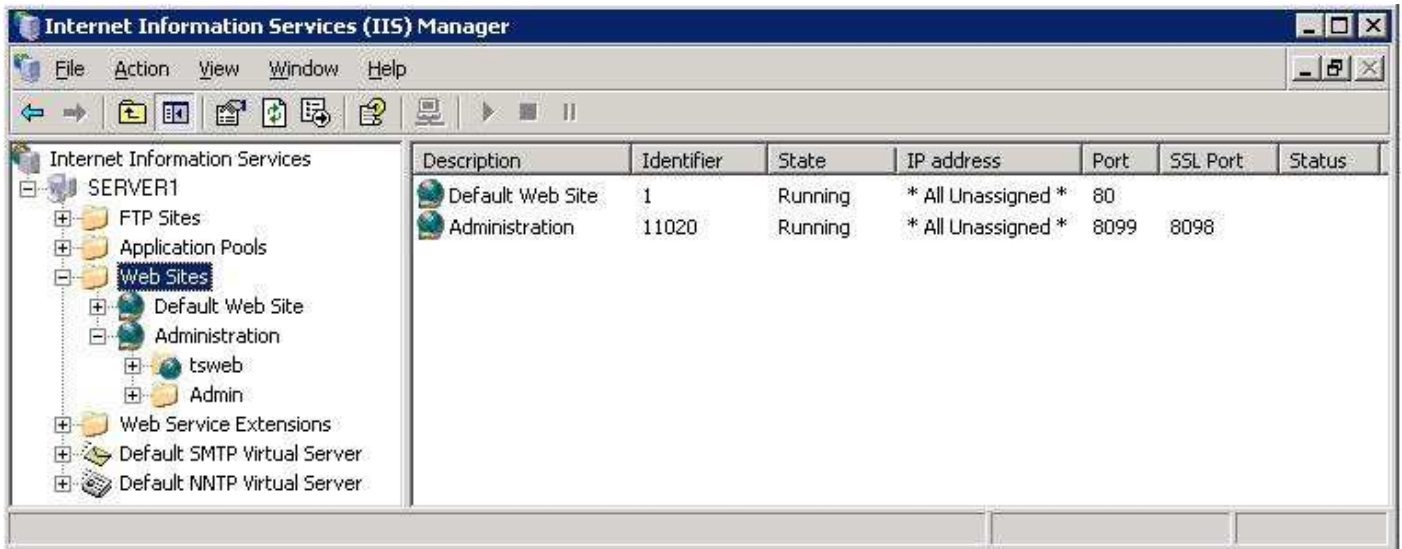
You install the Remote Administration tools on a server named Server1, selecting all default settings.

In Internet Explorer, you type `https://server1/admin`. You receive the following error message: "HTTP Error 404 File or directory not found."

You open IIS Manager and see the configuration shown in the exhibit. (Click the Exhibit button.)

You need to ensure that you can use Internet Explorer to administer Server1. What should you do?

**Exhibit:**



- A. In Internet Explorer, type http://server1:8099.
- B. In Internet Explorer, type http://server1.
- C. Install the Remote Desktop Web Connection subcomponent of the World Wide Web services.
- D. In Internet Explorer, type https://server1:8098.
- E. In Internet Explorer, type https://server1.

**Answer:** E

**QUESTION 5**

You are the network administrator for your company. The network consists of a single Active Directory domain. All network servers run Windows Server 2003, and all are members of the domain. All client computers run Windows XP Professional.

Five Web servers host the content for the internal network. Each one runs IIS and has Remote Desktop connections enabled.

Web developers are frequently required to update content on the Web servers.

You need to ensure that the Web developers can use Remote Desktop Connection to transfer Web documents from their client computers to the five Web servers.

What should you do?

- A. Install the Terminal Server option on all five Web servers. Use Terminal Services Configuration Manager to modify the session directory setting.
- B. Install the Terminal Server option on all five Web servers. Use Terminal Services Configuration Manager to