

70-246

Monitoring and Operating a Private Cloud with
System Center 2012

DEMO

<https://www.islever.com/70-246.html>

<https://www.islever.com/microsoft.html>

For the most up-to-date exam questions and materials, we recommend visiting our website, where you can access the latest content and resources.

Exam A

QUESTION 1

Your company has a datacenter in Los Angeles that contains a private cloud. The private cloud is managed by using a System Center 2012 Virtual Machine Manager (VMM) infrastructure.

You create a host group named HG1. You move Several Hyper-V hosts to HG1.

You plan to manage Windows updates for the hosts in HG1 by using VMM.

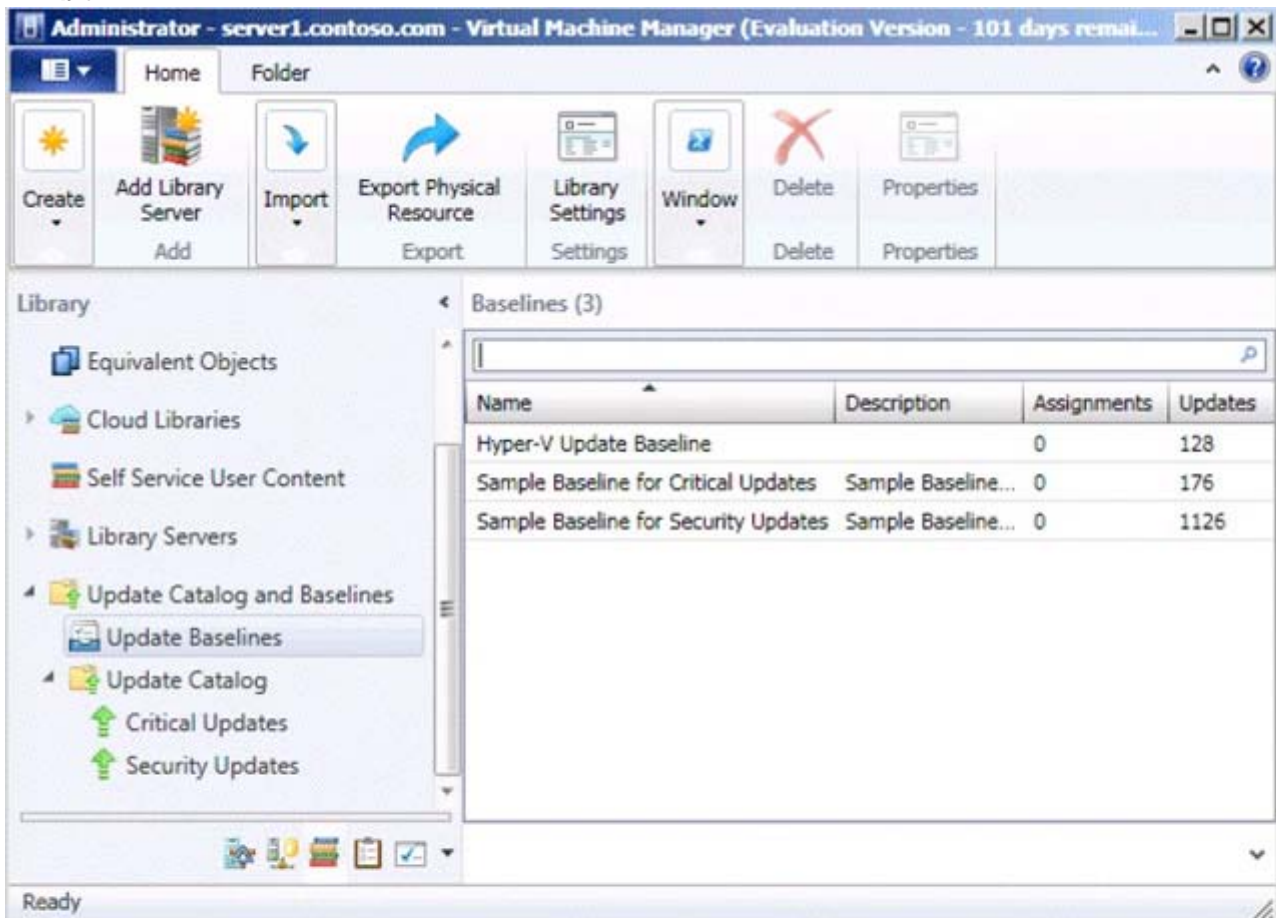
An administrator creates a baseline as shown in the exhibit. (Click the Exhibit button.)

You discover that the updates defined in the baseline are not applied to the hosts in HG1.

You need to ensure that the required updates are deployed to the hosts in HG1.

What should you do?

Exhibit:



- A. Synchronize the Windows Server Update Service (WSUS) server.
- B. Copy the Virtual Machine template to an alternate location.
- C. Copy the required updates to the VMM library server.
- D. Modify the properties of HG1.

E. Modify the properties of the baseline.

Correct Answer: E

Explanation

Explanation/Reference:

<http://technet.microsoft.com/en-us/library/gg675110.aspx>

To assign computers to a built-in update baseline

1. Open the Library workspace.
2. On the Library pane, expand Update Catalog and Baselines, and then click Update Baselines.

The Baselines pane displays the two built-in baselines: Sample Baseline for Security Updates and Sample Baseline for Critical Updates.

3. On the Baselines pane, click Sample Baseline for Security Updates.
4. On the Home page, in the Properties group, click Properties.

The Properties dialog box for the Sample Baseline for Security Updates opens.

Note

On the left of the dialog box, click Updates to open the Updates page.

5. On the Updates page, optionally add or remove update baselines from the baselines that are listed. The Sample Baseline for Security Updates includes all security updates. To ensure that all security updates are remediated, do not remove any baselines.

6. Click Assignment Scope to open the Assignment Scope page and then, select host groups, host clusters, and computers to add to the baseline.

Computers are represented by the roles they perform in VMM. When you select a role, such as VMM server, all the roles that the computer performs in VMM are selected. For example, if your VMM management server is also a library server, selecting your VMM management server under VMM Server causes the same computer under Library Servers to be selected.

To apply a baseline to all hosts, select the All Hosts root host group.

7. Click OK to save your changes.

QUESTION 2

Your company has a datacenter in Los Angeles. The datacenter contains a private cloud that is managed by a System Center 2012 Virtual Machine Manager (VMM) infrastructure. The infrastructure contains two management servers and 10 Hyper-V hosts.

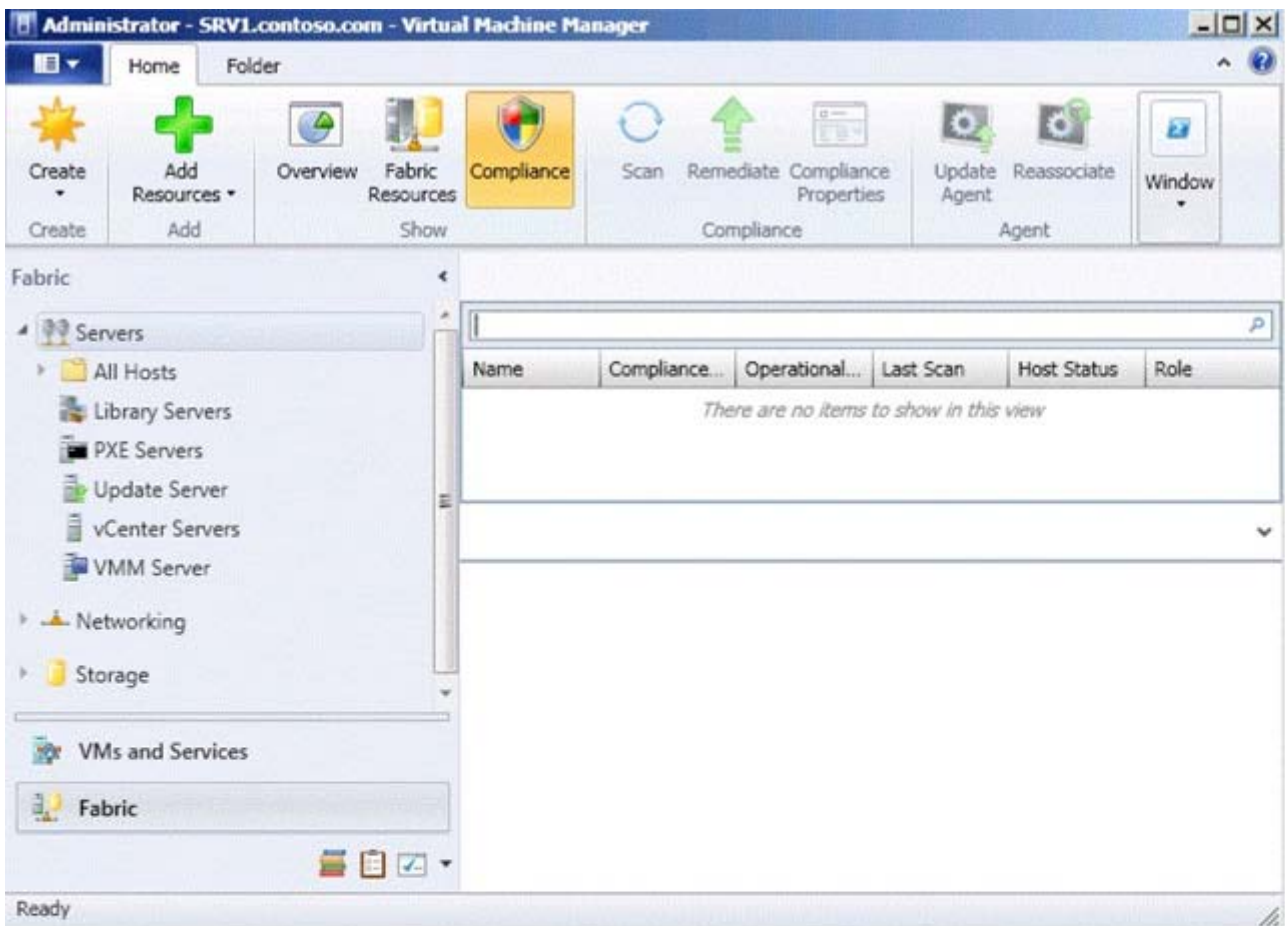
You configure VMM to use an update server to synchronize the updates by using a Windows Server Update Service (WSUS) server named WSUS1.

You attempt to verify compliance with the Sample Baseline for Security Updates. You view the console as shown in the exhibit (Click the Exhibit button.)

You need to ensure that you can verify compliance for all of the Hyper-V hosts.

What should you modify?

Exhibit:



- A. the update classifications of the update server
- B. the Assignment Scope of the baseline
- C. the default configuration provider
- D. the Network settings of the All Hosts host group

Correct Answer: B

Explanation

Explanation/Reference:

To add a Windows Server Update Server to VMM

In the VMM console, open the Fabric workspace.

On the Home tab, in the Add group, click Add Resources, and then click Update Server.

The Add Windows Server Update Services Server dialog box opens.

In Computer name, enter the fully qualified domain name (FQDN) of the WSUS server (for example,