

ISLEVER

# 650-296

TelePresence Video Sales Engineer for  
Advanced Exam (PATVSEA)

DEMO

<https://www.islever.com/650-296.html>

<https://www.islever.com/cisco.html>

For the most up-to-date exam questions and materials, we recommend visiting our website, where you can access the latest content and resources.

Note: The answer is for reference only, you need to understand all question.

### QUESTION 1

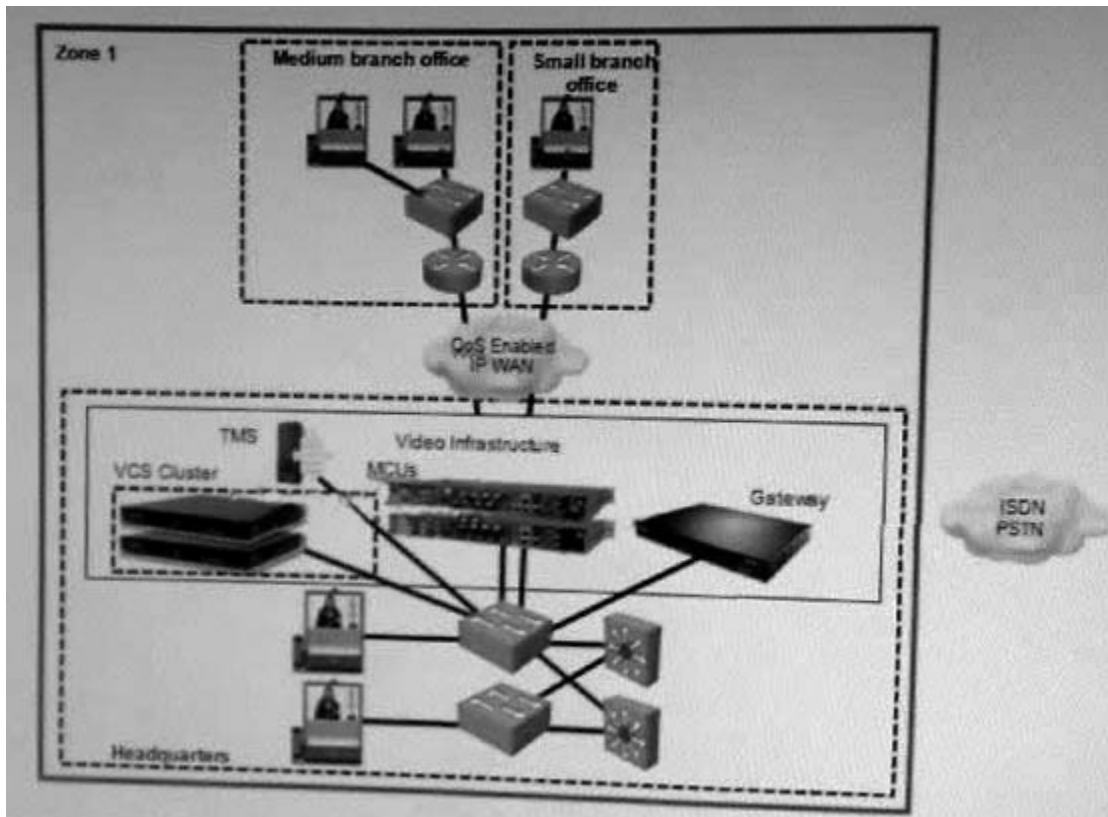
Why would you include include a gateway in your design?

- A. Gateways assist in video and conferencing integration
- B. Gateways allow for simplification of the address plan by elimination the need for dialing a full PSTN number
- C. Gateways provide network translation if varying protocols are used
- D. Gateways are required to integrate multiple endpoints

Answer: C

### QUESTION 2

Refer to the exhibit, Which deployment model is represented?



- A. campus multizone
- B. WAN multizone
- C. campus single zone
- D. WAN single zone

**Answer: D**

### **QUESTION 3**

Which three methods can be used to start a conference with the Cisco TelePresence Video Communication Server? (Choose three)

- A. Use the web interface of the Cisco TelePresence Video Communication Server
- B. Use the Cisco TelePresence System user interface
- C. Call directly into a conference from an endpoint
- D. Use a FindMe connection
- E. Connect to a VCS Expressway from an IP endpoint
- F. Receive a request-for-conference call from a connected user
- G. Use the Cisco TelePresence remote control

**Answer: BCG**

### **QUESTION 4**

Which of these is an advantage of the multizone model VCS with Prefix Dialing?

- A. Location requests are only sent to the relevant zone
- B. Location VCS servers only need to know about the directory VCS and do not need to know about any other local VCS
- C. When adding a new zone, only the directory gatekeeper needs to be configured
- D. All gatekeepers know about all calls at times

**Answer: A**

### **QUESTION 5**

Your network uses a combination of SIP and H.323 endpoints. When planning to implement firewalls for security, what device permits traversal of the firewall for these devices?]

- A. Gateway
- B. VCS Expressway
- C. Tandberg Management Suite
- D. multipoint control unit
- E. Cisco TelePresence

**Answer: B**

**QUESTION 6**

Which two of these configurations must be applied when dialing from an IP endpoint to an ISDN destination?  
(Choose two)

- A. A dial plan rule must be created
- B. Gateway services numbers should mimic incoming PSIT routing methods
- C. The Cisco TelePresence Software Version TC4.0 protocol is required
- D. DID mapping must be configured on the ISDN gateway
- E. A prefix must be registered with the gatekeeper

**Answer:** AE

**QUESTION 7**

How does the VCS Expressway allow secure traversal of a firewall?

- A. It uses a designated port to allow all traffic to pass through the firewall
- B. It takes the place of a firewall to control trusted messages using a pre-set list of destinations
- C. It makes outbound connections only
- D. It prohibits all incoming and outgoing message from untrusted destinations

**Answer:** C

**QUESTION 8**

Which MSE blade provides high-definition multipoint control unit support?

- A. Cisco MSE 8510 Media2
- B. Cisco MSE 8420 Media
- C. Cisco MSE 8350 IP GW
- D. Cisco MSE 8220 VCR

**Answer:** A

**QUESTION 9**

Which of these is a disadvantage of a single-zone (VCS) WAN model?

- A. No endpoints will be able to place calls if connectivity is lost to the VCS location
- B. Not all signaling goes through the VCS in the headquarters, causing signaling traffic across the