

ISLEVER

# 642-845

Optimizing Converged Cisco Networks

DEMO

<https://www.islever.com/642-845.html>

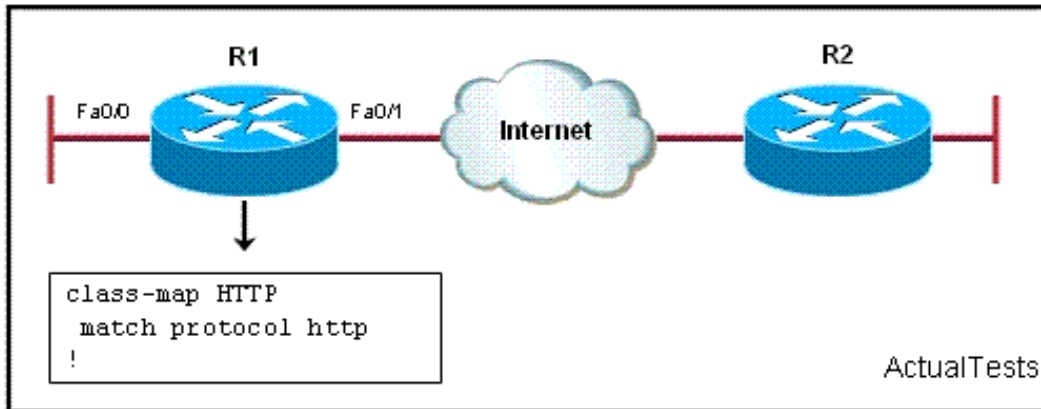
<https://www.islever.com/cisco.html>

For the most up-to-date exam questions and materials, we recommend visiting our website, where you can access the latest content and resources.

---

## QUESTION NO: 1

Refer to the exhibit. NBAR is to be configured on router R1 to limit outgoing Web traffic to 1 Mb/s. NBAR must also limit HTTP traffic on TCP ports 80 and 8080. On the basis of the information that is provided, which three configuration options must be configured on Router R1? (Choose three.)



- A. R1(config)# policy-map LIMITWEBBW  
R1(config-pmap)# class HTTP  
R1(config-pmap-c)# bandwidth 1000
- B. R1(config)# ip nbar port-map http tcp 80  
R1(config)# ip nbar port-map http tcp 8080
- C. R1(config)# interface FastEthernet 0/0  
R1(config-if)# service-policy output LIMITWEBBW
- D. R1(config)# ip nbar port-map http tcp 80 8080
- E. R1(config)# policy-map LIMITWEBBW  
R1(config-pmap)# class HTTP  
R1(config-pmap-c)# bandwidth percent 10
- F. R1(config)# interface FastEthernet 0/1  
R1(config-if)# service-policy output LIMITWEBBW

**Answer: A,D,F**

## QUESTION NO: 2

Which two statements describe traffic policing? (Choose two.)

- A. Excess traffic is buffered so that the traffic remains within the desired rate.
- B. Packets that conform to traffic policies are not delayed.
- C. Traffic bursts are smoothed out by queuing the excess traffic to produce a steadier flow of data.
- D. Packet marking is available and allows excess packets to be re-marked with a lower priority.

**Answer: B,D**

## QUESTION NO: 3

This item contains several questions that you must answer. You can view these questions by clicking on the Questions button to the left. Changing questions can be accomplished by clicking the numbers to the left each question. In order to complete the question, you will need to refer to the SDM and the topology, neither of which is currently visible.

To gain access to either the topology or the SDM, click on the button to left side of the screen that corresponds to the section you wish to access. When you have finished viewing the topology or the SDM, you can return to your questions by clicking on the Questions button to the left.

<b>Instructions</b>	This item contains several questions that you must answer. You can view these questions by clicking on the Questions button to the left. Changing questions can be accomplished by clicking the numbers to the left of each question. In order to complete the questions, you will need to refer to the SDM and the topology, neither of which is currently visible.
<b>Questions</b>	To gain access to either the topology or the SDM, click on the button to left side of the screen that corresponds to the section you wish to access. When you have finished viewing the topology or the SDM, you can return to your questions by clicking on the Questions button to the left.
<b>Cisco SDM 5.0</b>	
<b>Topology</b>	

The screenshot displays the Cisco Router and Security Device Manager (SDM) interface. The top section shows the 'Quality of Service' configuration page, including a table of QoS Policies and a detailed view of the 'SDMSignal-Serial0/3/0' policy.

Policy Name	Policy Type	Applied to Interface	IP Address
SDMSignal-Serial0/3/0	SDM-Default	Serial0/3/0	172.16.1.1
SDMPol-FastEthernet0/0	SDM-Default	FastEthernet0/0	172.16.10.1

Traffic Type	Class Name	Enabled	Protocols
Real Time	SDMSignal-Serial0/3/0	<input checked="" type="checkbox"/>	h323, rtsp
Real Time	SDMVoice-Serial0/3/0	<input checked="" type="checkbox"/>	rtsp audio
Real Time	SDMVideo-Serial0/3/0	<input checked="" type="checkbox"/>	cuseeme, netshow, rtsp, steamwork, volive
Real Time	SDMVideo-Serial0/3/0	<input checked="" type="checkbox"/>	rtsp video
Business-Critical	SDMRout-Serial0/3/0	<input checked="" type="checkbox"/>	bgp.eigrp, eigrp, ospf, rip, rsvp
Business-Critical	SDMTrans-Serial0/3/0	<input checked="" type="checkbox"/>	dlcp, dns, imap, kerberos, ldap, secure-imap, secure-ldap, sntp
Business-Critical	SDMManage-Serial0/3/0	<input checked="" type="checkbox"/>	citrix, finger, notes, novadigm, pcanywhere, secure-telnet, sqllt

Configuration delivered to router. 08:12:11 UTC Wed Nov 15 2006

The bottom section shows a network topology diagram with a 'Branch' router and a 'Central' router connected via a cloud. The Branch router has Fa0/0 and S0/3/0 interfaces. Various devices like IP phones and laptops are connected to the Branch router.

ActualTests

Your Money, Inc. is a large worldwide investment firm. Using the SDM QoS wizard, the company has recently implemented QoS policies at one of their Branch locations. As a recent addition to the network engineering team, you have been tasked with documenting the active QoS configuration at the branch router using the Cisco Router and Security Device Manager (SDM) utility. Using the SDM output from the Edit QoS Policy Tab in the Quality of Service Tasks under the Configure

---

button, answer the following questions:

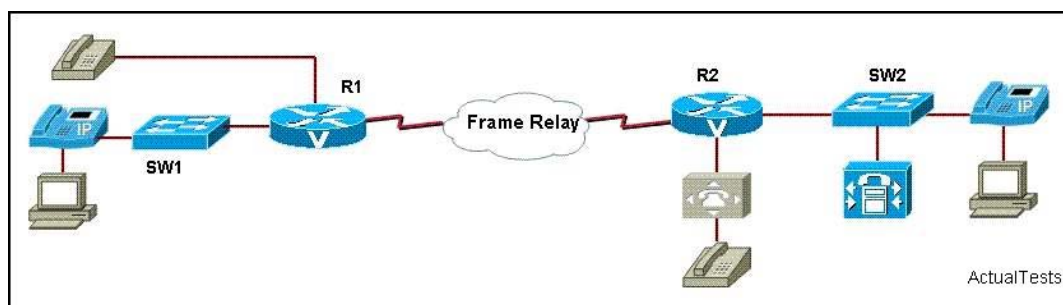
During periods of congestion which queuing method will be applied to outbound traffic on the Serial0/3/0 interface?

- A. No queuing is applied to outbound traffic on this interface.
- B. Class-based Weighted Fair Queuing
- C. Low Latency Queuing
- D. Weighted Round Robin
- E. Round Robin

**Answer: C**

#### QUESTION NO: 4

Refer to the exhibit. The serial link that connects the two offices has a bandwidth of 128 kbps. What could be done to set aside 64 kbps of bandwidth to transport VoIP traffic over the WAN link?



- A. Apply the auto-cost reference-bandwidth 64 command on both sides of the serial link.
- B. Apply the bandwidth 64 command on both serial interfaces connected to the WAN link.
- C. Apply the ip bandwidth-percent eigrp 1 64 command on both sides of the serial link.
- D. Apply the frame-relay voice-bandwidth 64000 command to enable the QoS Call Admission Control feature on the serial link.
- E. Apply the max-conn 64 command on a perial peer basis on both sides of the serial link.
- F. Apply the clock rate 64000 command on both serial interfaces connected to the WAN link.

**Answer: D**

#### QUESTION NO: 5

Refer to the exhibit. Which statement is true?

Exhibit: