

ISLEVER

# 642-144

IP Telephony Express(IPTX)

DEMO

<https://www.islever.com/642-144.html>

<https://www.islever.com/cisco.html>

For the most up-to-date exam questions and materials, we recommend visiting our website, where you can access the latest content and resources.

**QUESTION NO: 1 DRAG DROP**

Drop

Click and drag the characteristic on the left to the compression algorithm it best describes on the right.

G.728	CS-CELP
G.729	
operates at 8 kbps	
operates at 16 kbps	
uses a smaller codebook	
adds a look-ahead of 5 ms	
keeps look-ahead to 2 to 5 ms	

ActualTests

Drag and drop question. Drag the items to the proper locations.

**Answer:**

Click and drag the characteristic on the left to the compression algorithm it best describes on the right.

G.728	CS-CELP
G.729	operates at 8 kbps
operates at 8 kbps	G.729
operates at 16 kbps	adds a look-ahead of 5 ms
uses a smaller codebook	LD-CELP
adds a look-ahead of 5 ms	operates at 16 kbps
keeps look-ahead to 2 to 5 ms	G.728
	uses a smaller codebook
	keeps look-ahead to 2 to 5 ms

ActualTests

**Explanation:**

Click and drag the characteristic on the left to the compression algorithm it best describes on the right.

G.728	CS-CELP
G.729	operates at 8 kbps
operates at 8 kbps	G.729
operates at 16 kbps	adds a look-ahead of 5 ms
uses a smaller codebook	LD-CELP
adds a look-ahead of 5 ms	operates at 16 kbps
keeps look-ahead to 2 to 5 ms	G.728
	uses a smaller codebook
	keeps look-ahead to 2 to 5 ms

ActualTests

---

**QUESTION NO: 2**

Which two Tel scripts make up the B-ACD? (Choose two.)

- A. Call Queue
- B. Auto Attendant
- C. Basic Queuing
- D. Direct Inward Dial
- E. Automated Queuing
- F. Automated Call Distributor

**Answer: A,B**

**QUESTION NO: 3**

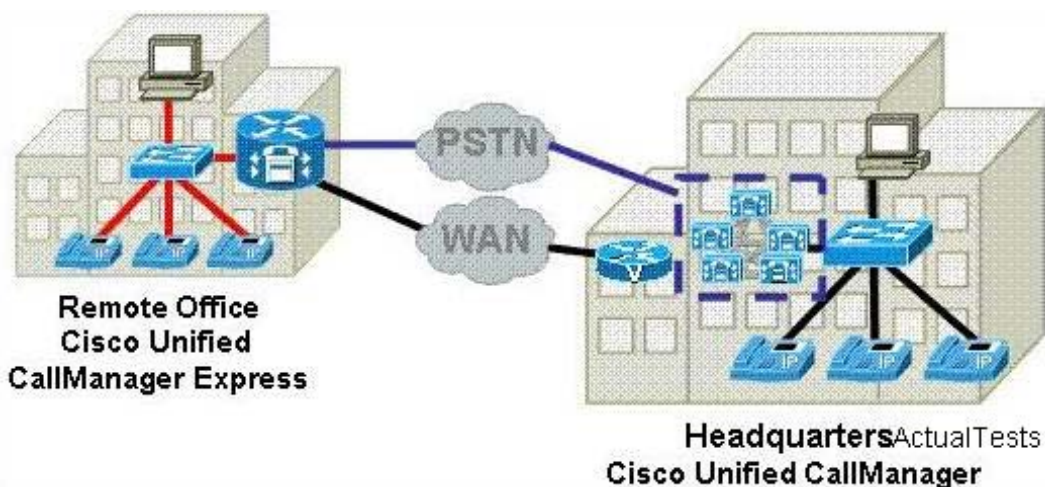
The Clinton Howe Weights and Measures Company wants to send CDRs to a syslog server. Which two options are required? (Choose two.)

- A. The CDR collection must be enabled from the CLI.
- B. The syslog server IP address must be configured using the logging command.
- C. The CDRs must be sent to the syslog server using the gw-accounting syslog command.
- D. The logging file must be initialized using the logging buffered command.

**Answer: B,C**

**QUESTION NO: 4**

Refer to the exhibit. Where would a Cisco Unity Express Network Module physically reside?



- A. PC at headquarters
- B. PC at the remote office

- 
- C. voice-enabled router at headquarters
  - D. Cisco Unified CallManager publisher at headquarters
  - E. Cisco Unified CallManager subscriber at headquarters
  - F. Cisco Unified CallManager Express router at the remote office

**Answer: F**

#### QUESTION NO: 5

Refer to the exhibit. The Hamilton Hair Emporium was having difficulty hearing during conference calls. This configuration adjustment was made, and now the company is experiencing sound distortion. What is the cause?

```
HHERouter(config-telephony)#max-conference 12 gain 6
```

- A. The gain functionality applies to outbound audio packets. Distortion is created when an external participant causes echo.
- B. The distortion is unrelated to the gain functionality. Rather, it is a result of the company trying to maintain too many conference calls at one time.
- C. This functionality cannot discriminate between a local VoIP source that requires volume gain and a CO-powered PSTN source that does not require volume gain.
- D. This functionality cannot discriminate between a remote VoIP or Foreign Exchange Office source that requires volume gain, and a remote VoIP or IP phone that does not require volume gain.

**Answer: D**

#### QUESTION NO: 6

The network administrator at Silver Ball GeneralCom has downloaded the cme-gui-xxx.xx.tar file ("xxx.xx" represents the version number of the file) for Cisco Unified CallManager Express. Which file will be extracted?

- A. xml.template
- B. normalijjserjs
- C. music-on-hold.au
- D. ATA03u1uuSCCP04u211A.zip

**Answer: B**