

ISLEVER

# 640-816

Interconnecting Cisco Networking Devices Part

2

DEMO

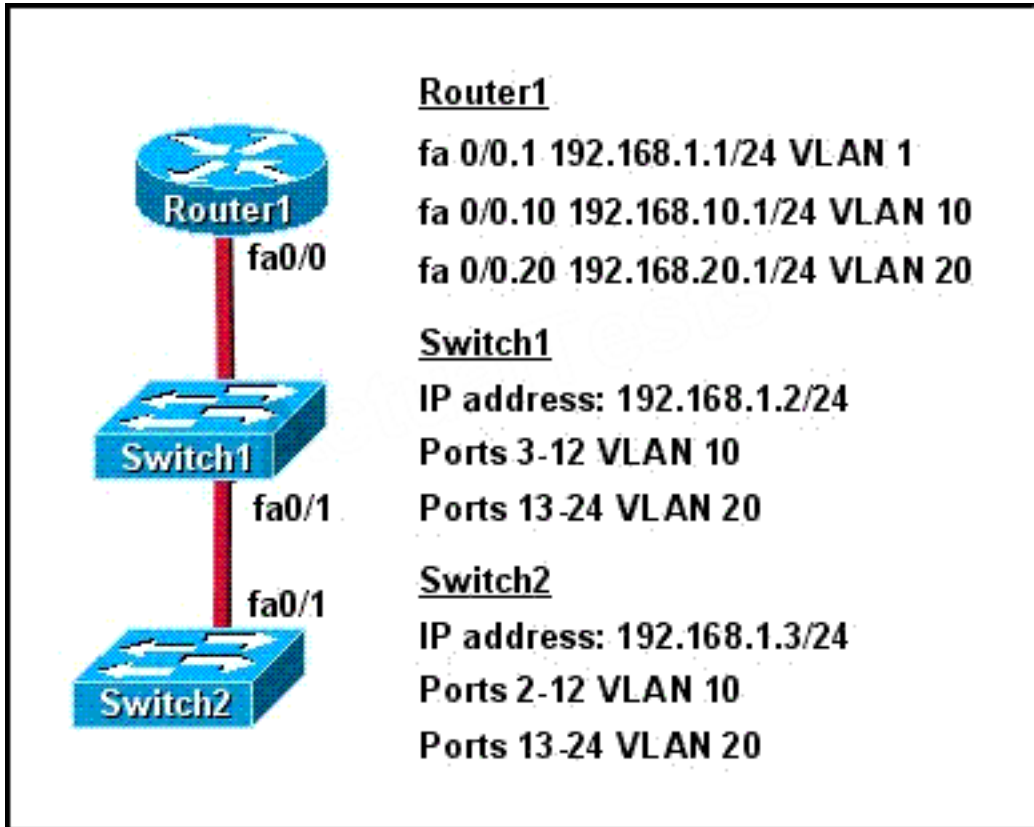
<https://www.islever.com/640-816.html>

<https://www.islever.com/cisco.html>

For the most up-to-date exam questions and materials, we recommend visiting our website, where you can access the latest content and resources.

QUESTION NO: 1

Refer to the exhibit.



How should the FastEthernet0/1 ports on the 2950 model switches that are shown in the exhibit be configured to allow connectivity between all devices?

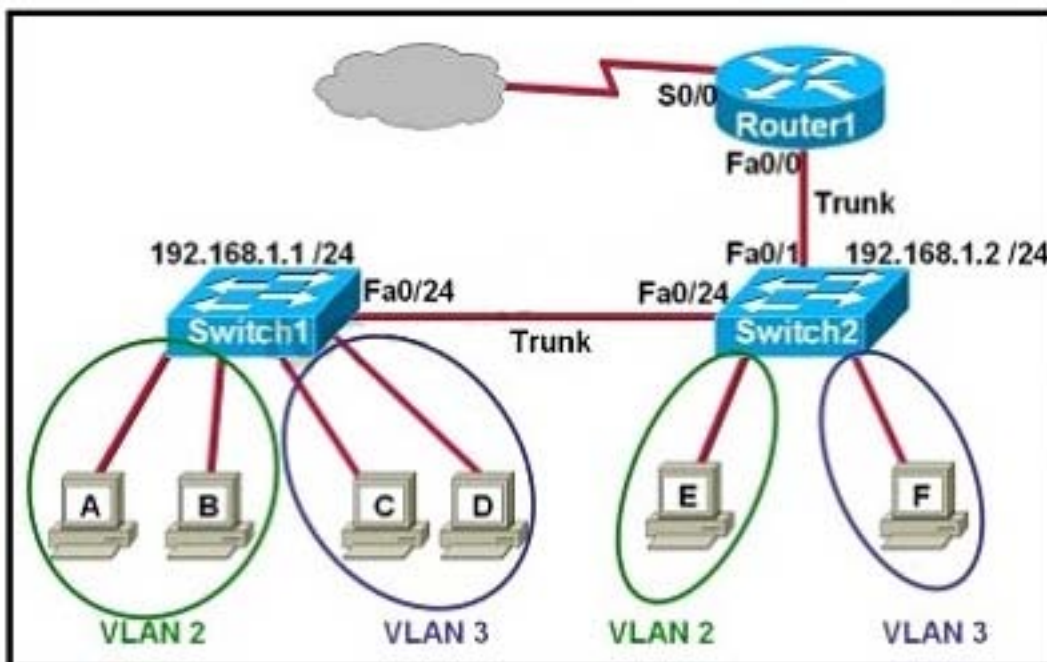
- A. The ports only need to be connected by a crossover cable.
- B. SwitchX (config)# interface fastethernet 0/1  
SwitchX (config-if)# switchport mode access  
SwitchX (config-if)# switchport access vlan 1
- C. SwitchX (config)# interface fastethernet 0/1  
SwitchX (config-if)# switchport mode trunk  
SwitchX (config-if)# switchport trunk vlan 1  
SwitchX (config-if)# switchport trunk vlan 10  
SwitchX (config-if)# switchport trunk vlan 20
- D. SwitchX(config)# interface fastethernet 0/1  
SwitchX(config-if)# switchport mode trunk

**Answer: D**

**Explanation:**

**QUESTION NO: 2**

Refer to the exhibit.



Which two statements are true about interVLAN routing in the topology that is shown in the exhibit? (Choose two.)

- A. Host E and host F use the same IP gateway address.
- B. Router1 and Switch2 should be connected via a crossover cable.
- C. Router1 will not play a role in communications between host A and host D.
- D. The FastEthernet 0/0 interface on Router1 must be configured with subinterfaces.
- E. Router1 needs more LAN interfaces to accommodate the VLANs that are shown in the exhibit.
- F. The FastEthernet 0/0 interface on Router1 and Switch2 trunk ports must be configured using the same encapsulation type.

**Answer: D,F**

**Explanation:**

---

**QUESTION NO: 3**

A department decides to replace its hub with a Catalyst 2950 switch that is no longer needed by another department. To prepare the switch for installation, the network administrator has erased the startup configuration and reloaded the switch. However, PCs that are connected to the switch experience various connectivity problems. What is a possible cause of the problem?

- A. The VLAN database was not erased.
- B. The management VLAN is disabled.
- C. The running configuration should have been erased.
- D. The "mode" button was not pressed when the switch was reloaded.
- E. The switch was not configured with an IP address or a default gateway.

**Answer: A**

**Explanation:**

**QUESTION NO: 4**

Refer to the exhibit.

```
Switch# show spanning-tree vlan 1
VLAN0001
Spanning tree enabled protocol rstp
Root ID    Priority    20481
           Address    0008.217a.5800
           Cost      38
           Port      1 (FastEthernet0/1)
           Hello Time 2 sec Max Age 20 sec Forward Delay 15 sec

Bridge ID  Priority    32769 (priority 32768 sys-id-ext 1)
           Address    0008.205e.6600
           Hello Time 2 sec Max Age 20 sec Forward Delay 15 sec
           Aging Time 300

Interface   Role Sts Cost      Prio.Nbr Type
-----
Fa0/1       Root FWD 19        128.1   P2p
Fa0/4       Desg FWD 38        128.1   P2p
Fa0/11      Altn BLK 57        128.1   P2p
Fa0/13      Desg FWD 38        128.1   P2p
```

Why has this switch not been elected the root bridge for VLAN1?

- A. It has more than one interface that is connected to the root network segment.
- B. It is running RSTP while the elected root bridge is running 802.1d spanning tree.
- C. It has a higher MAC address than the elected root bridge.
- D. It has a higher bridge ID than the elected root bridge.

**Answer: D**