

ISLEVER

# 640-802

Cisco Certified Network Associate

DEMO

<https://www.islever.com/640-802.html>

<https://www.islever.com/cisco.html>

For the most up-to-date exam questions and materials, we recommend visiting our website, where you can access the latest content and resources.

---

## Topic 1, Volume A

### QUESTION NO: 1

Refer to the exhibit. What could be possible causes for the "Serial0/0 is down" interface status? (Choose two.)

```
Router1#show interfaces serial 0/0
Serial0/0 is down, line protocol is down
  Hardware is MK5025
  Serial Internet address is 10.1.1.2/24
  MTU 1500 bytes, BW 1544 Kbits, DLY 20000 usec, rely 255/255, load 9/255
  Encapsulation PPP, loopback not set, keepalive set (10 sec)
  <some output omitted>
```

- A. A Layer 1 problem exists.
- B. The bandwidth is set too low.
- C. A protocol mismatch exists
- D. An incorrect cable is being used.
- E. There is an incorrect IP address on the Serial 0/0 interface.

**Answer: A,D**

**Explanation:**

### QUESTION NO: 2

Before installing a new, upgraded version of the IOS, what should be checked on the router, and which command should be used to gather this information? (Choose two.)

- A. the amount of available ROM
- B. the amount of available flash and RAM memory
- C. the version of the bootstrap software present on the router
- D. show version
- E. show processes
- F. show running-config

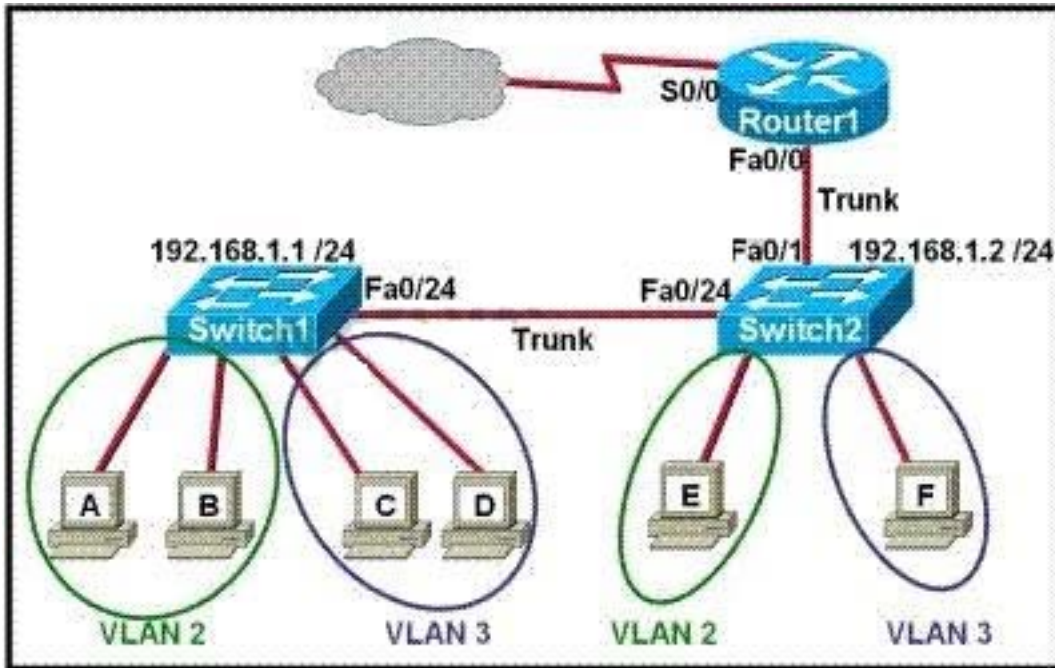
**Answer: B,D**

**Explanation:**

---

**QUESTION NO: 3**

Refer to the exhibit. Which two statements are true about interVLAN routing in the topology that is shown in the exhibit? (Choose two.)



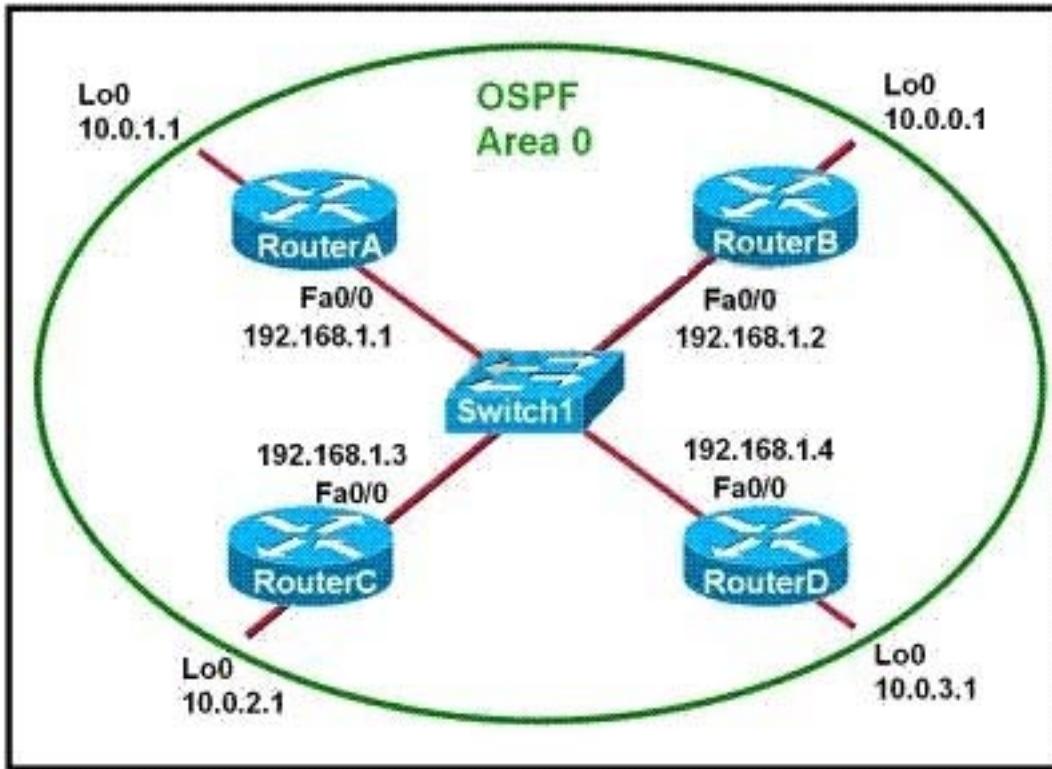
- A. Host E and host F use the same IP gateway address.
- B. Router1 and Switch2 should be connected via a crossover cable.
- C. Router1 will not play a role in communications between host A and host D.
- D. The FastEthernet 0/0 interface on Router1 must be configured with subinterfaces.
- E. Router1 needs more LAN interfaces to accommodate the VLANs that are shown in the exhibit.
- F. The FastEthernet 0/0 interface on Router1 and Switch2 trunk ports must be configured using the same encapsulation type.

**Answer: D,F**

**Explanation:**

**QUESTION NO: 4**

Refer to the exhibit. Which two statements are true about the loopback address that is configured on RouterB? (Choose two.)



- A. It ensures that data will be forwarded by RouterB.
- B. It provides stability for the OSPF process on RouterB.
- C. It specifies that the router ID for RouterB should be 10.0.0.1.
- D. It decreases the metric for routes that are advertised from RouterB.
- E. It indicates that RouterB should be elected the DR for the LAN.

**Answer: B,C**

**Explanation:**

### QUESTION NO: 5

If you are a network administrator, how will you explain VTP configuration to a new technician?  
(Choose three.)

- A. In the VTP client mode, a switch is unable to update its local VLAN database.
- B. Configure a trunk link between the switches to forward VTP updates.
- C. In the VTP server mode, a switch is able to update a switch in the VTP transparent mode.
- D. In the VTP transparent mode, a switch will forward the received updates to other switches.
- E. A switch in the VTP server mode only updates switches in the VTP client mode that have a higher VTP revision number.
- F. A switch in the VTP server mode will update switches in the VTP client mode regardless of the configured VTP domain membership.

**Answer: A,B,D**