

ISLEVER

# 4A0-110

Alcatel-Lucent Advanced Troubleshooting

DEMO

<https://www.islever.com/4a0-110.html>

<https://www.islever.com/nokia.html>

For the most up-to-date exam questions and materials, we recommend visiting our website, where you can access the latest content and resources.

---

## QUESTION NO: 1

Two routers are physically connected to each other over Ethernet port 1/1/1.

Review the configuration information shown below. What state should the OSPF neighbor be in?

```
config> port 1/1/1
no shutdown
router interface toNode2
address 10.1.5.1/24
port 1/1/1
router ospf
area 0.0.0.0
interface "toNode2"
hello-interval 15
dead-interval 40
```

Node 2

```
config> port 1/1/1
no shutdown
router interface toNode1
address 10.1.5.2/24
port 1/1/1
router ospf
area 0.0.0.0
interface "toNode1"
```

ActualTests

- A. INIT
- B. EXCHANGE
- C. EXSTART
- D. FULL
- E. No OSPF neighbor

**Answer: E**

## QUESTION NO: 2

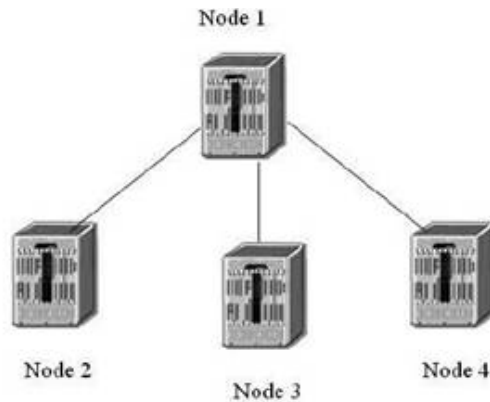
Which of the following debug statements can be used to troubleshoot if the OSPF adjacency is staying at xstart state? Select two answers.

- A. Debug routerospf rtm
- B. Debug routerospf packet dbdescr
- C. Debug routerospf neighbor
- D. Debug routerospf packet hello
- E. Debug routerospf spf

**Answer: B,C**

## QUESTION NO: 3

Based on the following configuration, which of the following statements are true? Choose all that apply.



Node-1

```

config>router>ospf#
area 0.0.0.0
interface "to-Node-2"
metric 50
authentication-key "PoGpEhE4333mHp52Iag6Z82" hash2
interface "to-Node-3"
metric 50
area 0.0.0.1
rssa
originate-default-route
interface "to-Node-4"
metric 50
  
```

Node-2

```

config>router>ospf#
area 0.0.0.0
interface "to-Node-1"
authentication-key "3b77iS4bPCeH2Arm5iaFuEA3Nba1q02" hash2
  
```

Node-3

```

config>router>ospf#
area 0.0.0.0
interface "to-Node-1"
hello-interval 15
  
```

Node-4

```

config>router>ospf#
area 0.0.0.1
interface "to-Node-1"
metric 50
  
```

ActualTests

- A. No OSPF adjacency found on Node 1
- B. Full OSPF adjacency between Node-1 and Node-2
- C. Full OSPF adjacency between Node-1 and Node-3
- D. Full OSPF adjacency between Node-1 and Node-4
- E. OSPF is enabled on Node 1

**Answer: B,E**

#### QUESTION NO: 4

Two routers are physically connected to each other over Ethernet port 1/1/1. Review the configuration information below. What state should the OSPF neighbor be in?

```
config> port 1/1/1
    ethernet
    mtu 1514
    exit
no shutdown
router interface toNode2
    address 10.1.3.1/24
    port 1/1/1
router ospf
    area 0.0.0.0
    interface "toNode2"
    mtu 1500
```

Node 2

```
config> port 1/1/1
no shutdown
router interface toNode1
    address 10.1.5.2/24
    port 1/1/1
router ospf
    area 0.0.0.0
    interface "toNode1"
    mtu 1500
```

ActualTests

- A. INIT
- B. EXCHANGE
- C. EXSTART
- D. FULL
- E. No OSPF neighbor

**Answer: D**

#### QUESTION NO: 5

Two routers are physically connected running ISIS. ISIS L2 adjacency is up and running but L1 adjacency is not up. Review the configuration information shown below: Which of the following statement best describe the cause of the problem? Select one answer only.