

ISLEVER

# 4A0-106

Nokia Virtual Private Routed Networks

DEMO

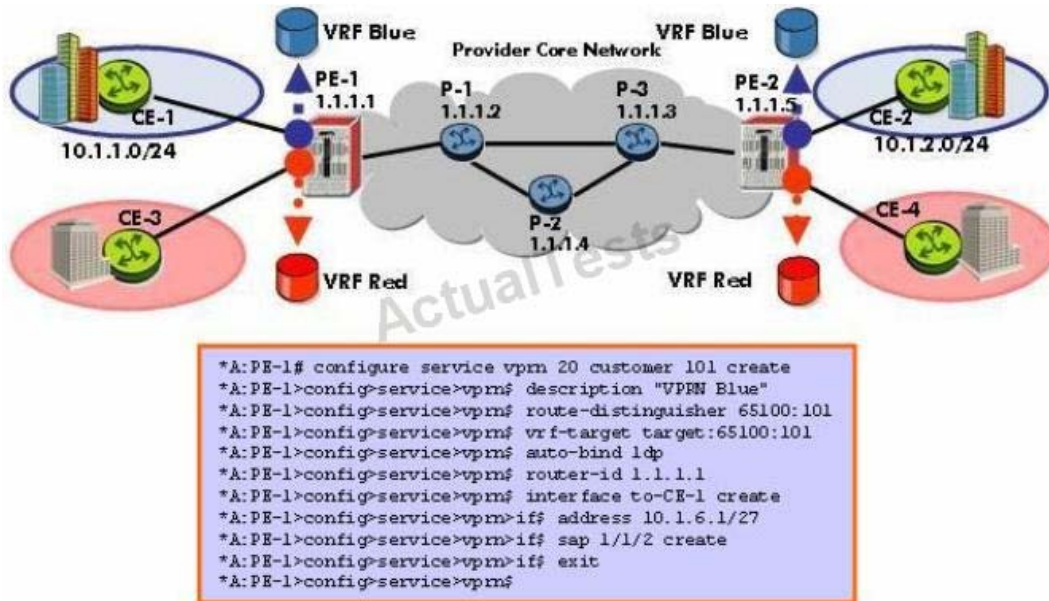
<https://www.islever.com/4a0-106.html>

<https://www.islever.com/nokia.html>

For the most up-to-date exam questions and materials, we recommend visiting our website, where you can access the latest content and resources.

## QUESTION NO: 1

Click the exhibit.



What is wrong with the VPRN configuration applied on this Alcatel-Lucent 7750 SR?

- A. The VPRN ID must match the value used in the vrf-target command.
- B. The VPRN ID must match the value used in the route-distinguisher command.
- C. The router-id command should not be used in this context.
- D. The "no shutdown" command must be configured for the VPRN to be operationally UP.

**Answer: D**

**Explanation:**

## QUESTION NO: 2

VPN-IPv4 addressing is made unique by defining an address structure consisting of:

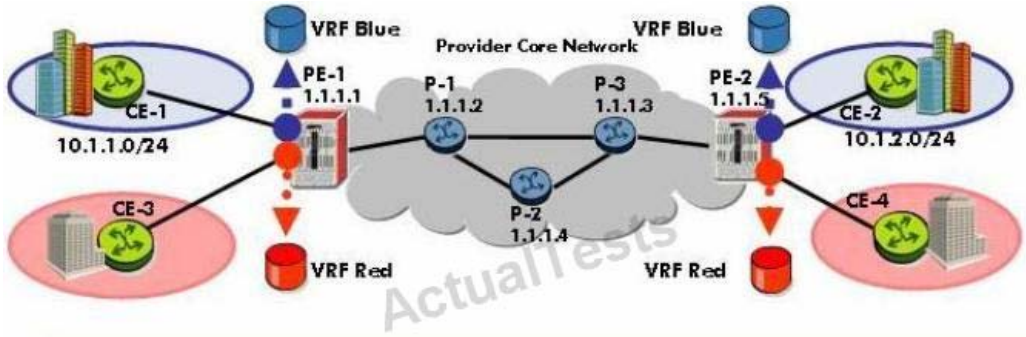
- A. A 64-bit Route Target followed by a 32-bit IPv4 address.
- B. A 64-bit Route Distinguisher followed by a 32-bit IPv4 address.
- C. A 32-bit Route Distinguisher followed by a 32-bit IPv4 address.
- D. A 32-bit Route Target followed by a 32-bit IPv4 address.

**Answer: B**

**Explanation:**

**QUESTION NO: 3**

Click the exhibit.



```
P-1# configure router ldp
P-1>config>router>ldp# interface-parameters
P-1>config>router>ldp>if-params# interface "P-1 to PE-1"
P-1>config>router>ldp>if-params>if# exit
P-1>config>router>ldp>if-params# interface "P-1 to P-2"
P-1>config>router>ldp>if-params>if# exit
P-1>config>router>ldp>if-params# interface "P-1 to P-3"
P-1>config>router>ldp>if-params>if# exit
```

An Alcatel-Lucent 7750 SR is to be configured as a core router that supports VPRNs using LDP as the transport protocol. Which of the following best describes this configuration?

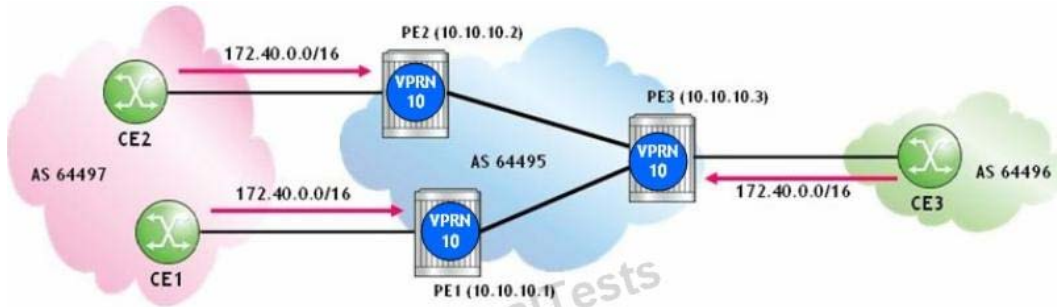
- A. This configuration is correct and complete.
- B. This configuration is correct, but the interfaces must also be configured in the "configure router mpls" context.
- C. There is no configuration required for LDP in the core network.
- D. This configuration is correct, but Targeted-LDP is also required.

**Answer: A**

**Explanation:**

**QUESTION NO: 4**

Click the exhibit.



```

PE1# configure service vprn 10
PE1>config>service>vprn# route-distinguisher 64495:20

PE2# configure service vprn 10
PE2>config>service>vprn# route-distinguisher 64495:20

PE3# configure service vprn 10
PE3>config>service>vprn# route-distinguisher 64495:10
PE3>config>service>vprn# ecmp 2
PE3>config>service>vprn# bgp multipath 2
PE3>config>service>vprn# bgp eigrp-loadbalance

```

Based on the displayed configuration, which routes does PE3 place in the VPRN 10 routing table?

- A. The routes learned from CE3 and PE1.
- B. The route learned from CE3 only.
- C. The routes learned from PE1 and PE2.
- D. The routes learned from CE3 and PE2.

**Answer: A**

**Explanation:**

**QUESTION NO: 5**

Click the exhibit.