

ISLEVER

352-001

ADVDESIGN (CCDE)

DEMO

<https://www.islever.com/352-001.html>

<https://www.islever.com/cisco.html>

For the most up-to-date exam questions and materials, we recommend visiting our website, where you can access the latest content and resources.

Topic 1, Volume A

QUESTION NO: 1

A company plans to include Nonstop Forwarding and Bidirectional Forwarding Detection as a part of their network redundancy plan. In which two ways do NSF and BFD work together when different hardware platforms are compared? (Choose two.)

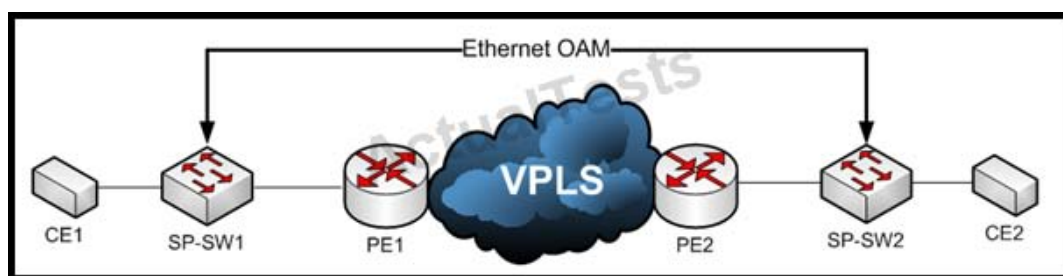
- A.** During supervisor engine or routing engine failover, the NSF feature will always ensure that the BFD at the peer router will not trigger a link down independent of the used hardware platform.
- B.** At some hardware platforms, BFD and NSF are not supported together. During supervisor engine or routing engine failover, the BFD at the peer router will trigger a link down.
- C.** To ensure that BFD at the peer router will not trigger a link down during NSF, the BFD packets must be processed fast enough, and, during supervisor engine or routing engine failover, by processing the BFD independent from the supervisor engine or routing engine.
- D.** Because BFD is always processed at the line cards (not at the supervisor engine or routing engine), a supervisor engine or routing engine failover will not affect the BFD peer router.
- E.** Because BFD is always processed at the supervisor engine or routing engine, a supervisor engine or routing engine failover will always trigger a link down at the peer router.

Answer: B,C

Explanation:

QUESTION NO: 2

Refer to the exhibit.



A service provider would like to use Ethernet OAM to detect end-to-end connectivity failures between SP-SW1 and SP-SW2. In which two of these ways can you design this solution? (Choose two.)

- A.** Enable Y.1731 Connectivity Fault Management on the SP switches.
- B.** E-LMI PDUs must be forwarded over VPLS.
- C.** Cisco Discovery Protocol PDUs must be forwarded over the VPLS.
- D.** Use upward maintenance endpoints on the SP switches.

E. Enable IEEE 802.1ag Connectivity Fault Management on the SP switches.

Answer: D,E

Explanation:

QUESTION NO: 3

A network design shows two routers directly connected to an Ethernet switch using optical connections. There is an OSPF adjacency between the routers. In this design, which solution will ensure that interface down detection is reported as quickly as possible to the IGP?

- A. optimized OSPF SPF timers
- B. Bidirectional Forwarding Detection
- C. automatic protection switching
- D. optimized OSPF LSA timers
- E. Ethernet OAM CFM monitoring

Answer: B

Explanation:

QUESTION NO: 4

A network designer is working with a company to improve convergence at the Layer 2 control plane and decides to use LACP. Which of these components does LACP use to create the system ID?

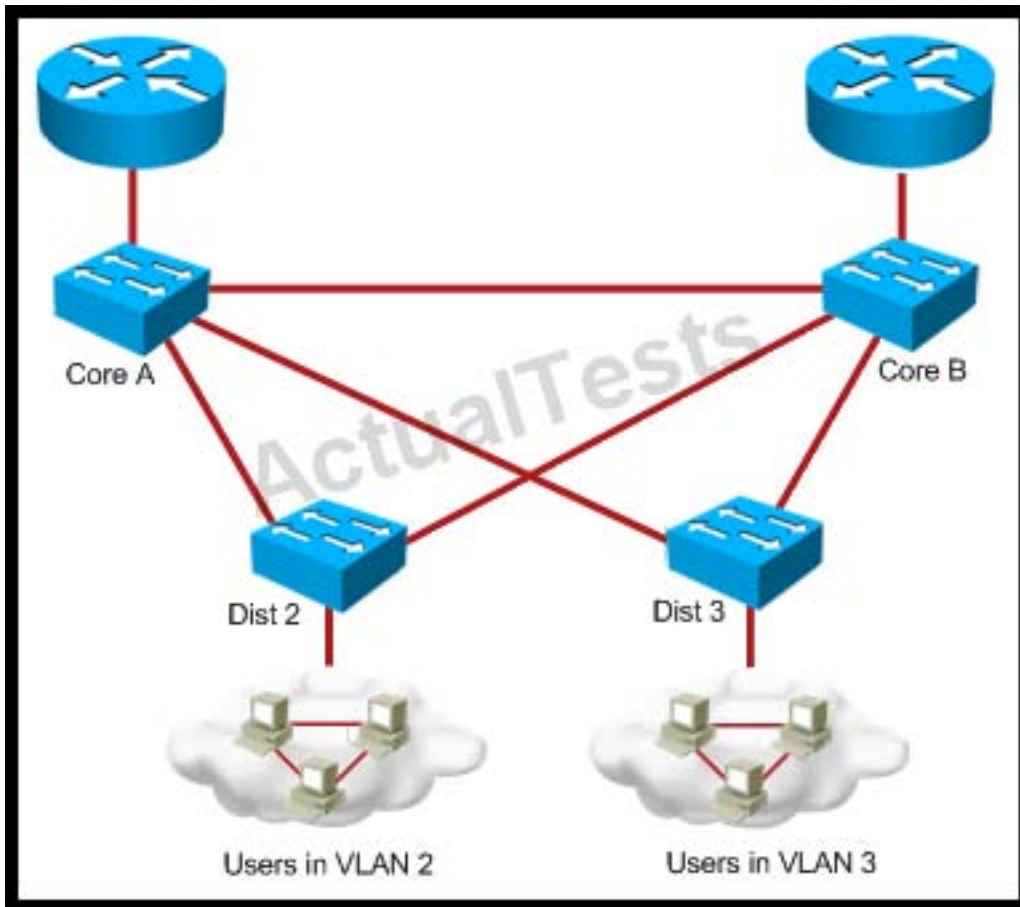
- A. LACP system priority and switch MAC address
- B. LACP port priority and switch MAC address
- C. LACP port priority and port number
- D. LACP system priority and port number

Answer: A

Explanation:

QUESTION NO: 5

Refer to the exhibit.



You are designing a spanning-tree network for a small campus. Which two of these options would result in a trouble-free spanning-tree network design? (Choose two.)

- A. Convert all ports to trunk ports, prune off the VLANs that you do not require, and minimize the number of blocking ports.
- B. Introduce Layer 3 VLANs (SVIs) and prune off the VLANs that you do not require.
- C. Convert all the ports to trunk and enable BackboneFast.
- D. Convert all the ports to trunk and enable UplinkFast between all the links.

Answer: A,B

Explanation:

QUESTION NO: 6

A network designer is redesigning an enterprise campus network to ensure that Ethernet switches proactively attempt to reconnect after a fiber cut. In the design, they will have to address areas where fiber cuts exist on campus from past troubleshooting, where a single fiber is disconnected in the fiber pair, leading to looping. Which feature could be implemented in the design to allow the Spanning Tree Protocol on the switches to be protected?