

ISLEVER

350-026

CCIE SP Content Networking ENU

DEMO

<https://www.islever.com/350-026.html>

<https://www.islever.com/cisco.html>

For the most up-to-date exam questions and materials, we recommend visiting our website, where you can access the latest content and resources.

QUESTION NO: 1

In Frame Relay, what devices resend packets that do not transmit correctly?

- A. Digital transmission media cabled to monitor ports, as opposed to straight DCE signaling
- B. Network switches running SNMP management software
- C. Special bridging devices within the backbone cloud
- D. Network end stations

Answer: D

QUESTION NO: 2

What is the proper format for the inverse DNS mapping for the following address: 198.133.219.25?

- A. 198.133.219.25.in-addr.arpa.
- B. 198.133.25.219.in-addr.arpa.
- C. 0.219.133.198.in-addr.arpa.
- D. 25.219.133.198.in-addr.arpa.
- E. 198.133.219.0.in-addr.arpa.

Answer: D

QUESTION NO: 3

A new Cisco router has no configuration defined. Which methods can be used to configure the router for the first time? (multiple answer)

- A. Connecting a terminal to the console port, defining a minimal configuration, connecting the router to the network, and using TFTP to download a configuration file that has been created ahead of time
- B. Connecting a terminal to the console port and directly typing in configuration commands
- C. Connecting a terminal to the console port and running the Setup dialogue
- D. Using BOOTP/SLARP/RARP to download a configuration file that has been created ahead of time
- E. Using SNMP via a network management station

Answer: A,B,C,D

QUESTION NO: 4

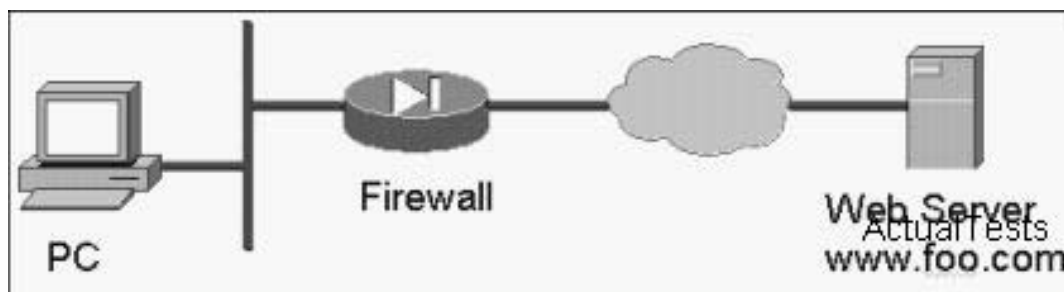
What does CSG do to traffic that does not match a content rule?

- A. Forwards, always
- B. Drops, always
- C. None of the above
- D. Forwards, when CSG is used in routed mode, drops otherwise
- E. Forwards, when CSG is used in bridged mode, drops otherwise

Answer: E

QUESTION NO: 5

Click the Exhibit button. A client at the PC is unable to browse to <http://www.foo.com>. On the firewall, what list of traffic types needs to be passed to allow browsing?



- A. tcp 25, ssl, dns
- B. icmp, udp 1645, tcp 8080
- C. ftp,smtp, dns
- D. icmp, tcp 49, tcp 443
- E. udp 53, tcp 80, ftp

Answer: E

QUESTION NO: 6

Select the group of technologies which are listed in descending order of bandwidth scale:

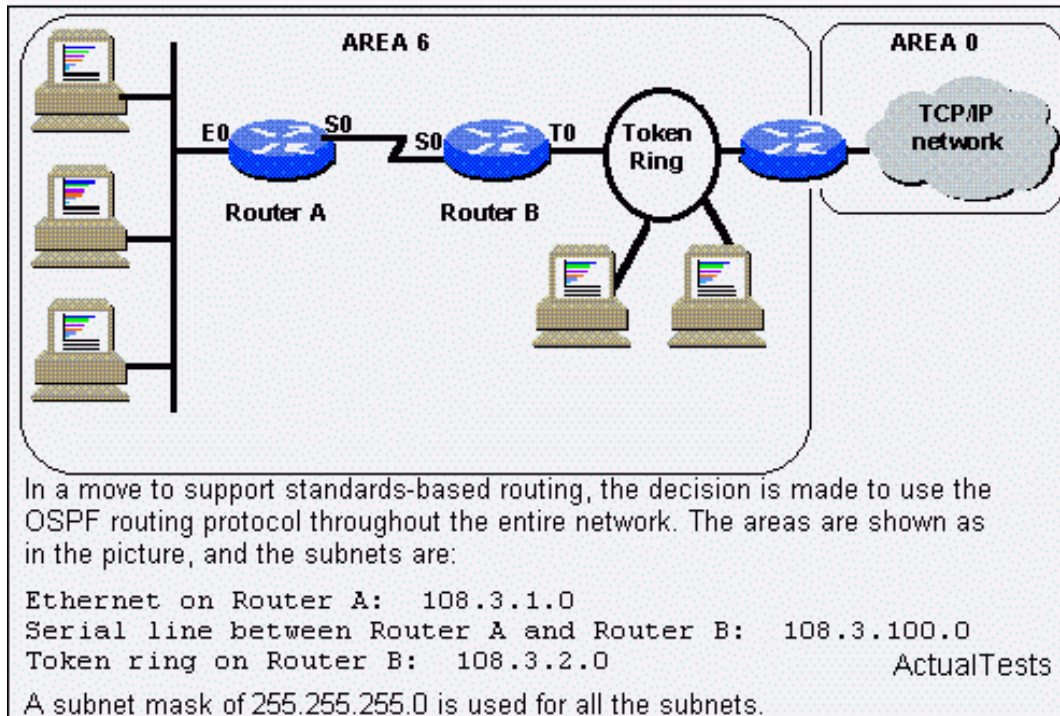
- A. DWDM, SDH, Frame Relay
- B. DWDM, SDH, ATM
- C. ATM, DWDM, Frame Relay
- D. SDH, X.25, ATM

Answer: B

QUESTION NO: 7

Click the Exhibit button to view the scenario.

How should OSPF be configured on Router B?



- A. routerospf 1
network 108.3.100.0 0.0.0.255 area 6
network 108.3.2.0 0.0.0.255 area 6
- B. routerospf 1
network 108.3.100.0 255.255.255.0 area 6
network 108.3.2.0 255.255.255.0 area 6
- C. routerospf
network 108.3.0.0
- D. routerospf 1
network 108.3.1.0 0.0.0.255 area 6
network 108.3.100.0 0.0.0.255 area 6
network 108.3.2.0 0.0.0.255 area 6
- E. routerospf 1
network 108.3.100.0 0.0.0.255 area 6
network 108.3.2.0 0.0.0.255 area 0

Answer: A

QUESTION NO: 8