

ISLEVER

350-020

CCIE SP Optical Qualification Exam

DEMO

<https://www.islever.com/350-020.html>

<https://www.islever.com/cisco.html>

For the most up-to-date exam questions and materials, we recommend visiting our website, where you can access the latest content and resources.

QUESTION NO: 1

What IE is not mandatory in a Q.931 Service msg?

- A. Bearer capability
- B. Channel ID
- C. Message Type
- D. Change Status
- E. Call Reference

Answer: A

QUESTION NO: 2

The purpose of Administrative Distance, as used by Cisco routers, is:

- A. To choose between routes from different routing protocols when receiving updates for the same network
- B. To identify which routing protocol forwarded the update
- C. To define the distance to the destination used in deciding the best path
- D. To be used only for administrative purposes

Answer: A

QUESTION NO: 3

What is the maximum PMD value of a 100km fiber segment if the cable is specified with 0.5ps/km? (worst case)?

- A. 0.005ps
- B. .05ps
- C. 5ps
- D. 50ps
- E. 500ps

Answer: C

QUESTION NO: 4

What is the equivalent of 50 GHz spacing in DWDM in terms of nm?

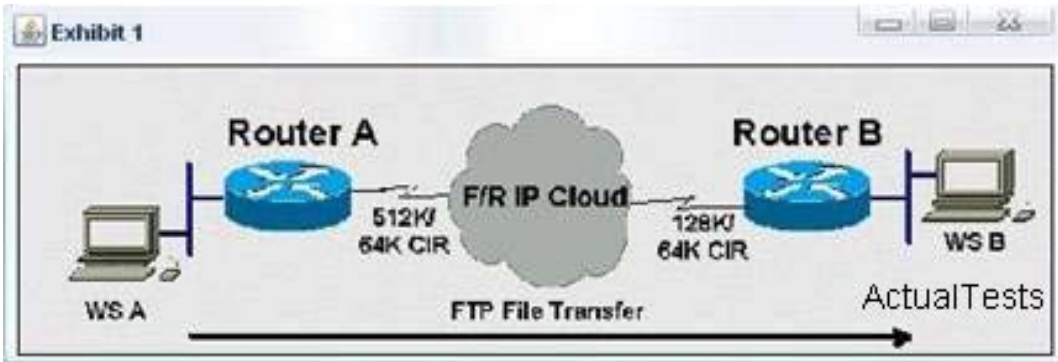
- A. 1.6 nm

- B. 0.8 nm
- C. 0.4 nm
- D. 0.2 nm

Answer: C

QUESTION NO: 5

Click the Exhibit to view the topology.



Router A has a 512K-access port into the frame relay cloud. Router B has 128K-access port into the frame relay cloud. The two routers are connected with symmetrical PVCs that are configured for 64K committed information rate (CIR). What Frame Relay Traffic Shaping map-class sub-command should be entered on Router A to prevent workstation A from overrunning the access port on Router B?

- A. frame-relay traffic-rate 128000 512000
- B. frame-relay traffic-rate 64000 512000
- C. frame-relay traffic-rate 512000 64000
- D. frame-relay traffic-rate 128000 64000
- E. frame-relay traffic-rate 64000 128000

Answer: E

QUESTION NO: 6

If a host sends a TCP segment with the RST flag set, it means:

- A. The receiver should send all data in the reassembly buffer to the application receiving it immediately.
- B. The receiver should reset the session.
- C. Any routers between the source and destination hosts should reset the state of the connection in their buffers.

D. The receiver should make certain its send buffer is pushed onto the wire.

Answer: B

QUESTION NO: 7

How many E1 channels can STM-1 frame transport?

- A. 7
- B. 21
- C. 63
- D. 84

Answer: C

QUESTION NO: 8

BGP can implement a policy of 'Route Dampening' to control route instability. What statement about route dampening is NOT correct?

- A. A numeric penalty is applied to a route each time it flaps.
- B. The penalty is exponentially decayed according to parameters, such as half-life-time.
- C. The history of unstable routes is forwarded back to the sender to control future updates.
- D. The route is eventually suppressed based on a configurable 'suppress limit'.

Answer: C

QUESTION NO: 9

MPLS traffic engineering data is carried by:

- A. Opaque LSAs or IS-IS TLVs
- B. BGP MEDs
- C. RTP or RTCP packets
- D. MBGP

Answer: A

QUESTION NO: 10