

ISLEVER

250-405

Administration of Symantec Management
Platform 7.5

DEMO

<https://www.islever.com/250-405.html>

<https://www.islever.com/symantec.html>

For the most up-to-date exam questions and materials, we recommend visiting our website, where you can access the latest content and resources.

Topic 1, Volume A

QUESTION NO: 1

What defines the link between user and computer resources?

- A. Resource Association
- B. Resource Data Class
- C. Resource Type
- D. Resource Link

Answer: A

Explanation:

QUESTION NO: 2

What must an administrator do to edit a sample task?

- A. Clone the sample task and edit the original task
- B. Right-click and select the task's properties
- C. Clone the source folder of the sample
- D. Clone the sample task and edit the clone

Answer: D

Explanation:

QUESTION NO: 3

A Symantec Management Platform 7.5 administrator attempts to discover all network resources using the ping function, and none are found. After conferring with the network administrator, it is determined that ping is blocked on all network devices for security purposes. Which other protocol can the administrator use to discover network devices using Network Discovery?

- A. CDP
- B. HIP
- C. ARP
- D. RIP

Answer: C

Explanation:

QUESTION NO: 4

Which Symantec Management Platform component initiates policy-based communication?

- A. Notification Server
- B. Symantec Management Agent
- C. Configuration Management Database (CMDB)
- D. Symantec Management Console

Answer: B

Explanation:

QUESTION NO: 5

Which Symantec Management Platform component processes data sent by the Altiris Agent and stores it in the Configuration Management Database?

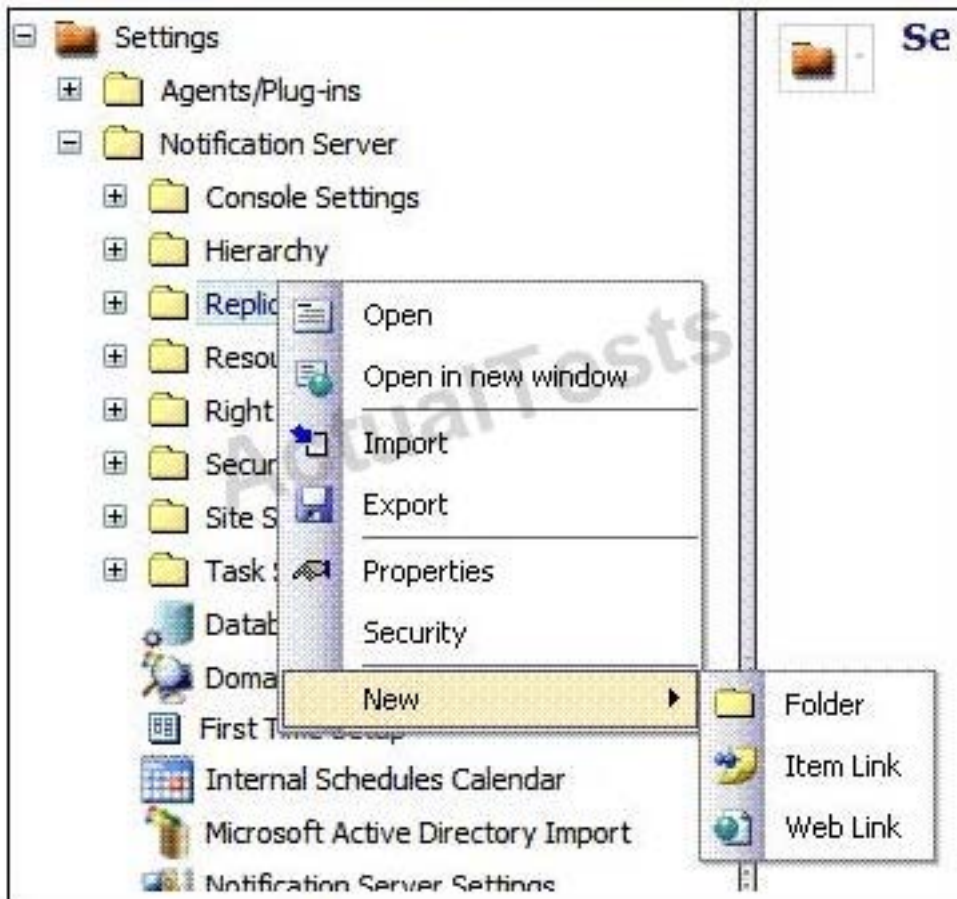
- A. Symantec Management Console
- B. Software Management Framework
- C. Notification Server
- D. Site Services

Answer: C

Explanation:

QUESTION NO: 6

Refer to the Exhibit.



An administrator is attempting to set up a replication rule. When the administrator right-clicks the replication folder, the menu in the exhibit appears. What does the administrator need to do to create a replication rule?

- A. enable Replication
- B. access one of the Replication subfolders
- C. access the resource and select Replicate Now
- D. create a subfolder and access it there

Answer: B

Explanation:

QUESTION NO: 7

Which two tabs are used to modify security roles in the Symantec Management Console? (Select two.)

- A. Permissions
- B. Privileges
- C. Rights