

ISLEVER

200-310

Designing for Cisco Internetwork Solutions

DEMO

<https://www.islever.com/200-310.html>

<https://www.islever.com/cisco.html>

For the most up-to-date exam questions and materials, we recommend visiting our website, where you can access the latest content and resources.

QUESTION 1

You want to gather as much detail as possible during a network audit, to include data time stamping across a large number of interfaces, customized according to interface, with a minimal impact on the network devices themselves. Which tool would you use to meet these requirements?

- A. RMON
- B. SNMPv3
- C. NetFlow
- D. Cisco Discovery Protocol

Answer: C

QUESTION 2

Which protocol is used for voice bearer traffic?

- A. MGCP
- B. RTP
- C. SCCP
- D. CDP
- E. ICMP

Answer: B

QUESTION 3

Which protocol is used to reserve bandwidth for the transport of a particular application data flow across the network?

- A. cRTP
- B. IEEE 802.1P
- C. RSVP
- D. LFI

E. Auto QOS

Answer: C

QUESTION 4

Which two features are supported by single wireless controller deployments? (Choose two.)

- A. automatic detection and configuration of LWAPPs
- B. LWAPP support across multiple floors and buildings
- C. automatic detection and configuration of RF parameters
- D. Layer 2 and Layer 3 roaming
- E. controller redundancy
- F. mobility groups

Answer: AB

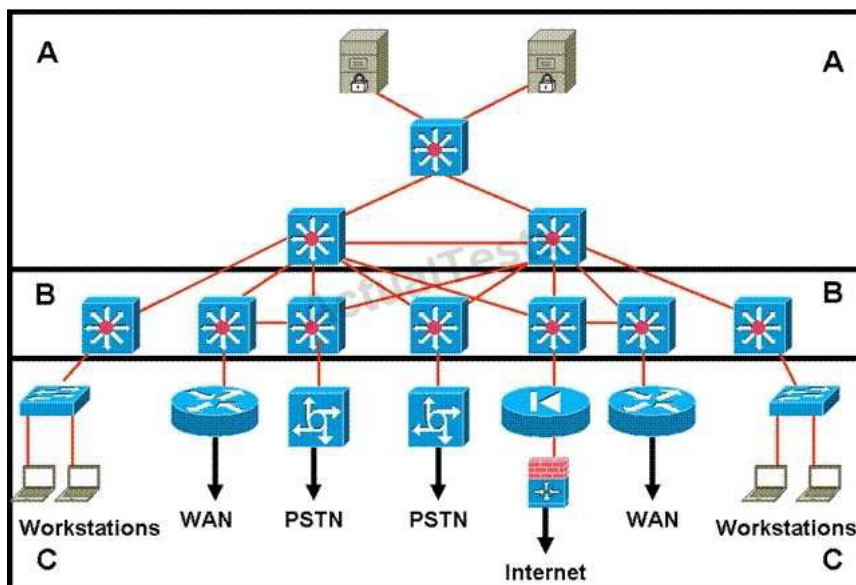
QUESTION 5

Which four services does the architecture for Media Services contain? (Choose four.)

- A. access services
- B. transport services
- C. storage services
- D. forwarding services
- E. session control services
- F. security services
- G. filtering services
- H. remote access services

Answer: ABCE

QUESTION 6



- A. Layer A
- B. Layer B
- C. Layer C
- D. Layers A and B form a consolidated core and distribution layer

Answer: B

QUESTION 7

Which IPv6 feature enables routing to distribute connection requests to the nearest content server?

- A. Link-local
- B. Site-local
- C. Anycast
- D. Multicast
- E. Global aggregatable

Answer: C