

ISLEVER

156-915

Certified Security Expert NGX (CCSE NGX)

DEMO

<https://www.islever.com/156-915.html>

<https://www.islever.com/checkpoint.html>

For the most up-to-date exam questions and materials, we recommend visiting our website, where you can access the latest content and resources.

QUESTION NO: 1

When restoring NGX using the upgrade import command, which of the following items are NOT restored?

- A. Security Policies
- B. Global properties
- C. Licenses
- D. User groups
- E. Route tables

Answer: E

QUESTION NO: 2

Your organization has many VPN-1 Edge gateways at various branch offices, to allow VPN-1 Secure Client users to access company resources. For security reasons, your organization's Security Policy requires all Internet traffic initiated behind the VPN-1 Edge gateways first be inspected by your headquarters' VPN-1 Pro Security Gateway. How do you configure VPN routing in this star VPN Community?

- A. To the Internet and other targets only
- B. To the center and other satellites, through the center
- C. To the center only
- D. To the center, or through the center to other satellites, then to the Internet and other VPN targets

Answer: D

QUESTION NO: 3

Your organization's security infrastructure separates Security Gateways geographically. You must request a central license for one remote Security Gateway. How would you request and apply the license? Request a central license:

- A. using the remote Gateway's IP address. Apply the license locally with the cplic put command.
- B. for the Gateways' IP address. Apply the license on the Smart Center Server with the cprlic put command.
- C. using the remote Gateway's IP address. Attach the license to the remote Gateway via Smart Update.
- D. using your Smart Center Server's IP address. Attach the license to the remote Gateway via Smart Update

E. using the Smart Center Server's IP address. Apply the license locally on the remote Gateway with the cplic put command.

Answer: D

QUESTION NO: 4

Your VPN Community includes three Security Gateways. Each Gateway has its own internal network defined as a VPN Domain. You must test the VPN-1 NGX route-based VPN feature, without stopping the VPN. What is the correct order of steps?

- A. 1. Add a new interface on each Gateway.
2. Remove the newly added network from the current VPN Domain for each Gateway.
3. Create VTIs on each Gateway, to point to the other two peers
4. Enable advanced routing on all three Gateways.
- B. 1. Add a new interface on each Gateway.
2. Remove the newly added network from the current VPN Domain in each gateway object.
3. Create VPN Tunnel Interfaces (VTI) on each gateway object, to point to the other two peers.
4. Add static routes on three Gateways, to route the new network to each peer's VTI interface.
- C. 1. Add a new interface on each Gateway.
2. Add the newly added network into the existing VPN Domain for each Gateway.
3. Create VTIs on each gateway object, to point to the other two peers.
4. Enable advanced routing on all three Gateways.
- D. 1. Add a new interface on each Gateway.
2. Add the newly added network into the existing VPN Domain for each gateway object.
3. Create VTIs on each gateway object, to point to the other two peers.
4. Add static routes on three Gateways, to route the new networks to each peer's VTI interface.

Answer: B

QUESTION NO: 5

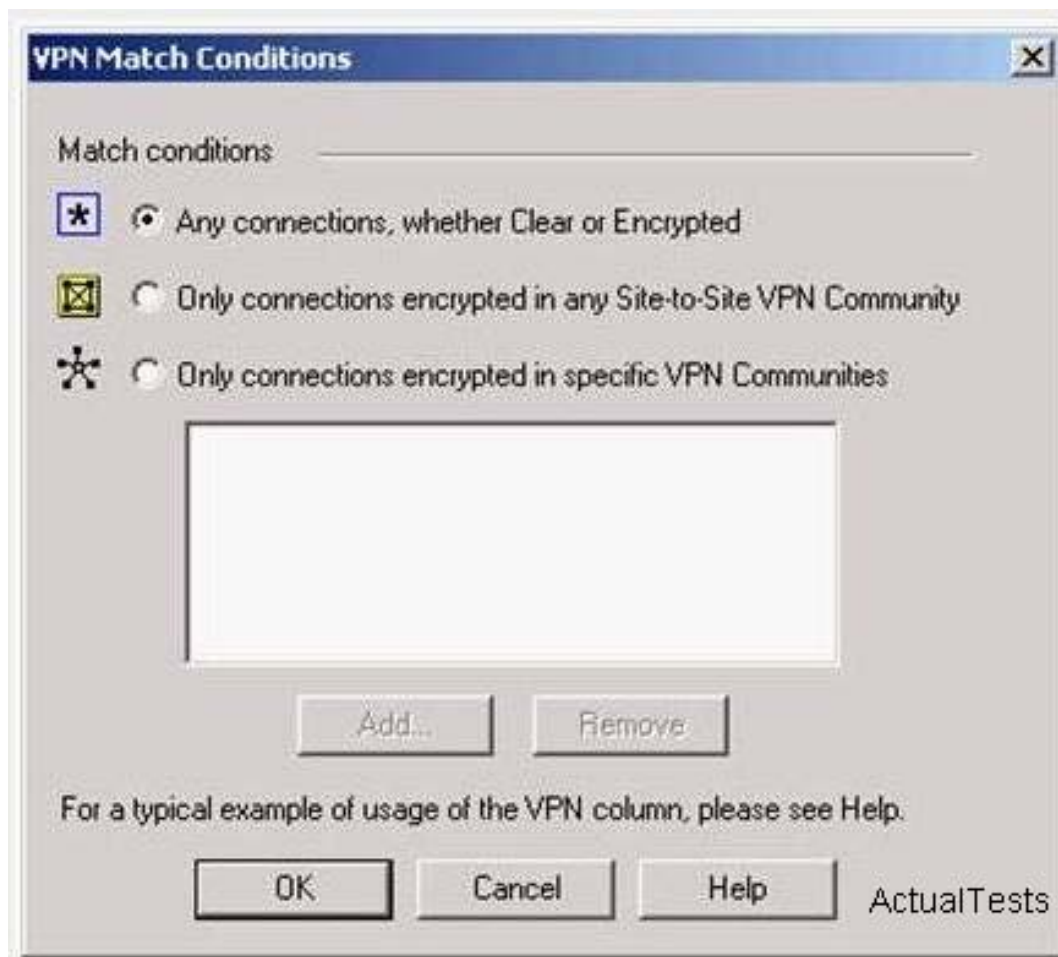
Eric wants to see all URLs' full destination paths in the Smart View Tracker logs, not just the fully qualified domain name of the Web servers. For example, the information filed of a log entry displays the URL http://hp.msn.com/css/home/hpcl1012.css. How can Eric best customize Smart View Tracker to see the logs he wants? Configure the URI resource, and select:

- A. "transparent" as the connection method
- B. "tunneling" as the connection method
- C. "optimize URL logging"; use the URI resource in the rule, with action "accept"
- D. "Enforce URL capability"; use the URI resource in the rule, with action "accept"

Answer: C

QUESTION NO: 6

Steve tries to configure Directional VPN Rule Match in the Rule Base. But the Match column does not have the option to see the Directional Match. Steve sees the following screen. What is the problem?



- A. Steve must enable `directional_match(true)` in the `objectes_5_0.C` file on Smart Center Server.
- B. Steve must enable Advanced Routing on each Security Gateway.
- C. Steve must enable VPN Directional Match on the VPN Advanced screen, in Global properties.
- D. Steve must enable a dynamic-routing protocol, such as OSPF, on the Gateways.
- E. Steve must enable VPN Directional Match on the gateway object's VPN tab.

Answer: C

QUESTION NO: 7

In a Management High Availability (HA) configuration, you can configure synchronization to occur automatically, when: