

ISLEVER

# 156-315.71

Check Point Certified Security Expert R71

DEMO

<https://www.islever.com/156-315-71.html>

<https://www.islever.com/checkpoint.html>

For the most up-to-date exam questions and materials, we recommend visiting our website, where you can access the latest content and resources.

---

## Topic 1, Volume A

### QUESTION NO: 1

You need to publish SecurePlatform routes using the ospf routing protocol. What is the correct command structure, once entering the route command, to implement ospf successfully?

- A. Run cpconfig utility to enable ospf routing
- B. ip route ospf  
ospf network1  
ospf network2
- C. Enable  
Configure terminal  
Router ospf [id]  
Network [network] [wildmask] area [id]
- D. Use DBedit utility to either the objects\_5\_0.c file

**Answer: C**

**Explanation:**

### QUESTION NO: 2

Control connections between the Security Management Server and the Gateway are not encrypted by the VPN Community. How are these connections secured?

- A. They are encrypted and authenticated using SIC.
- B. They are not encrypted, but are authenticated by the Gateway
- C. They are secured by PPTP
- D. They are not secured.

**Answer: D**

**Explanation:**

### QUESTION NO: 3

How does a cluster member take over the VIP after a failover event?

- A. Ping the sync interface
- B. if list -renew

- 
- C. Broadcast storm
  - D. Gratuitous ARP

**Answer: D**

**Explanation:**

#### **QUESTION NO: 4**

You want to verify that your Check Point cluster is working correctly. Which command line tool can you use?

- A. cphaconf state
- B. cphaprob state
- C. cphainfo-s
- D. cphastart -status

**Answer: B**

**Explanation:**

#### **QUESTION NO: 5**

\_\_\_\_\_ is a proprietary Check Point protocol. it is the basis for Check Point ClusterXL inter-module communication.

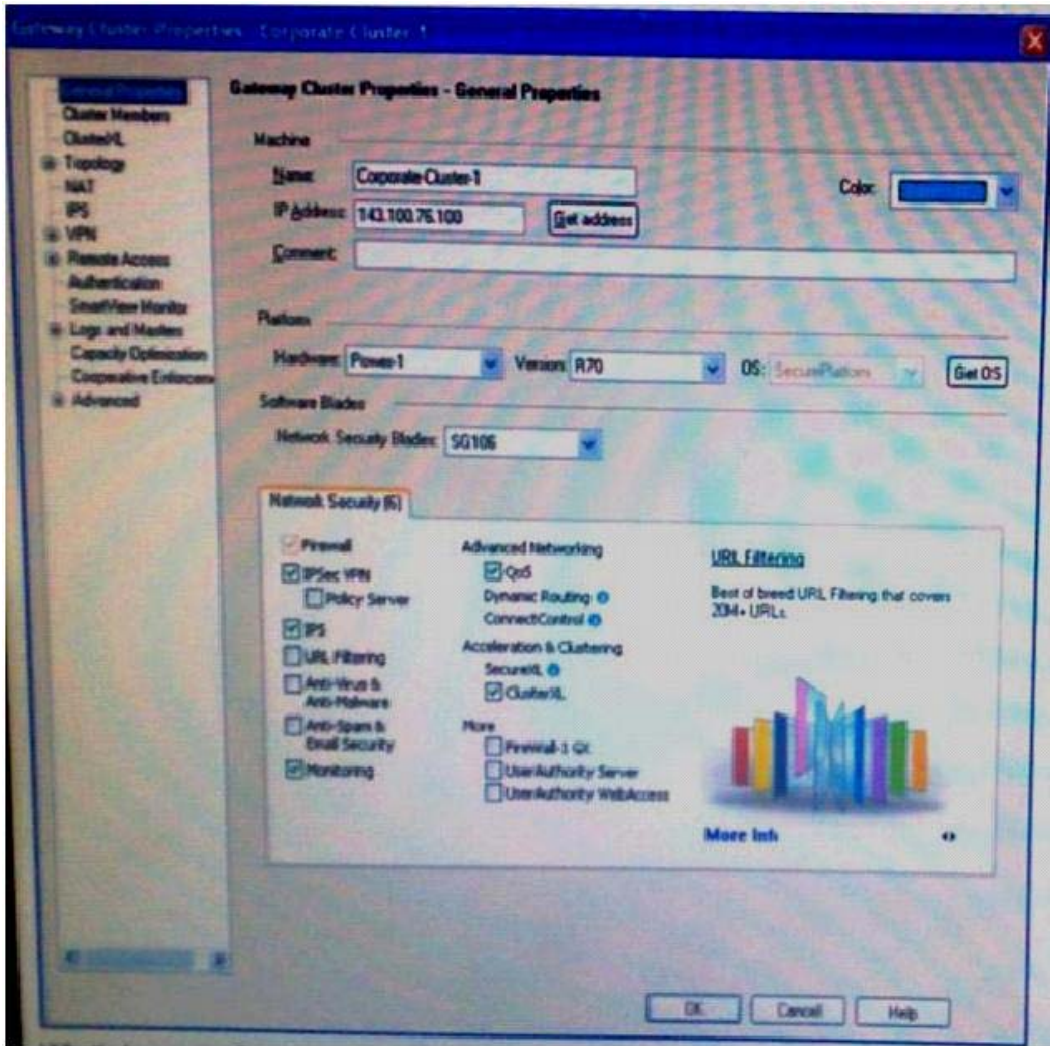
- A. RDP
- B. CCP
- C. CKPP
- D. HA OPCODE

**Answer: B**

**Explanation:**

#### **QUESTION NO: 6**

John is configuring a new R71 Gateway cluster but he can not configure the cluster as Third Party IP Clustering because this option is not available in Gateway Cluster Properties:



What's happening?

- A. John is not using third party hardware as IP Clustering is part of Check Point's IP Appliance
- B. Third Party Clustering is not available for R71 Security Gateways.
- B. ClusterXL needs to be unselected to permit 3rd party clustering configuration.
- C. John has an invalid ClusterXL license.

**Answer: C**

**Explanation:**

### QUESTION NO: 7

You are MegaCorp Security Administrator. This company uses a firewall cluster, consisting of two cluster members. The cluster generally works well but one day you find that the cluster is behaving strangely. You assume that there is a connectivity problem with the cluster synchronization cluster link (cross-over cable).