

ISLEVER

# 050-695

Novell eDirectory Design and  
Implementation:eDirectory 8.8

DEMO

<https://www.islever.com/050-695.html>

<https://www.islever.com/novell.html>

For the most up-to-date exam questions and materials, we recommend visiting our website, where you can access the latest content and resources.

---

**QUESTION NO: 1**

You are configuring an NTP time source for SERVER2 to contact. The time server source's name is SERVER1. 168.92.1.1 is the IP address used by SERVER1. Which parameter do you enter in SERVER2's /etc/ntp.conf file?

- A. 168.92.1.1:123
- B. 168.92.1.1:SERVER1
- C. SERVER1
- D. SERVER1:168.92.1.1
- E. 168.92.1.1

**Answer: D**

**QUESTION NO: 2**

You are doing an initial eDirectory installation on a NetWare server that has SYS and USER volumes mounted. There are also 3 printers on the network. Which objects are created during an initial eDirectory installation? (Choose 3.)

- A. Organizational container object
- B. Admin object
- C. Printer objects
- D. Volume file object
- E. Group object

**Answer: A,B,D**

**QUESTION NO: 3**

Which agents are used by SLP? (Choose 3.)

- A. Advertising agents
- B. User agents
- C. Routing agents
- D. Service agents
- E. Resource agents
- F. Directory agents

**Answer: B,D,F**

---

**QUESTION NO: 4**

Which replica or replicas contain a complete copy of all object information of a partition?

- A. Master, read/write, and read-only
- B. Master and read-only
- C. Master and read/write
- D. Master, read/write, read-only, and subordinate reference
- E. Master

**Answer: A**

**QUESTION NO: 5**

Which statement is true about eDirectory partitions?

- A. A partition provides fault tolerance for the file system.
- B. Partitions can overlap each other.
- C. A container object can reside in 2 partitions.
- D. Partitions are logical divisions of eDirectory that enable the database to be divided among several servers.

**Answer: D**

**QUESTION NO: 6**

As the project lead for your company's eDirectory design and implementation project, you have been following the eDirectory design cycle. You have completed the procedures in the project approach phase and the design phase. As you continue through the eDirectory design cycle, which procedure still needs to be completed?

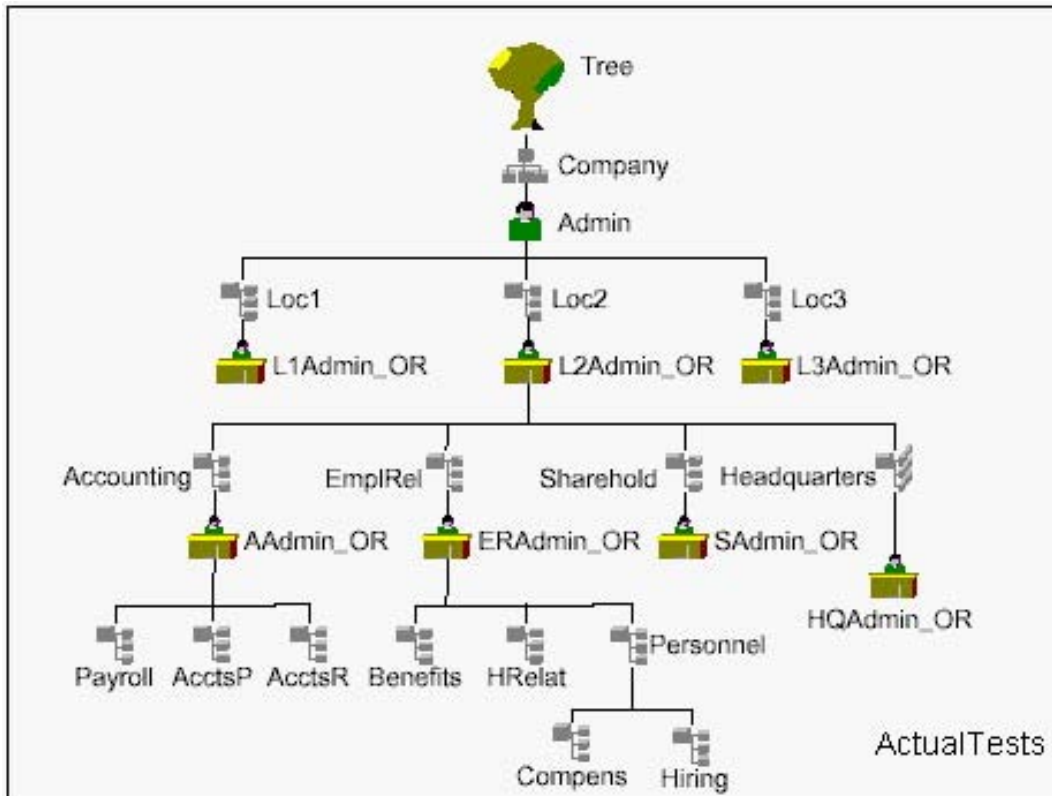
- A. Planning the user environment
- B. Setting a standard for eDirectory object names
- C. Determining a partition and replica placement strategy
- D. Planning a time synchronization strategy
- E. Designing the lower layers of the tree

**Answer: D**

**QUESTION NO: 7**

Begin by clicking the Exhibit button.

Which administrative approach was used for the tree in the graph?



- A. Centralized approach
- B. Location-based approach
- C. Combination approach
- D. Decentralized approach
- E. Functional approach

**Answer: D**

### QUESTION NO: 8

Which is recommended when designing the upper layers of your eDirectory tree?

- A. Keep the eDirectory tree name short, descriptive, and unique.
- B. Use a flat tree design.
- C. Avoid large container sizes.
- D. Create containers that reflect common employee access needs.
- E. Minimize the number of login scripts.

**Answer: A**