

050-691

advanced novell network amnagement:netware
6.5

DEMO

<https://www.islever.com/050-691.html>

<https://www.islever.com/novell.html>

For the most up-to-date exam questions and materials, we recommend visiting our website, where you can access the latest content and resources.

QUESTION NO: 1

A NetWare 4.2 server is currently servicing one of your branch offices. All of the user's data is saved on the USERS volume. You are deploying a Branch Office solution. To save time, you want to install the Branch Office Appliance software on top of the NetWare 4.2 server and then simply mount the existing USERS volume as an Appliance volume. Assuming the server hardware meets the system requirements for the Branch Office Appliance, will this work?

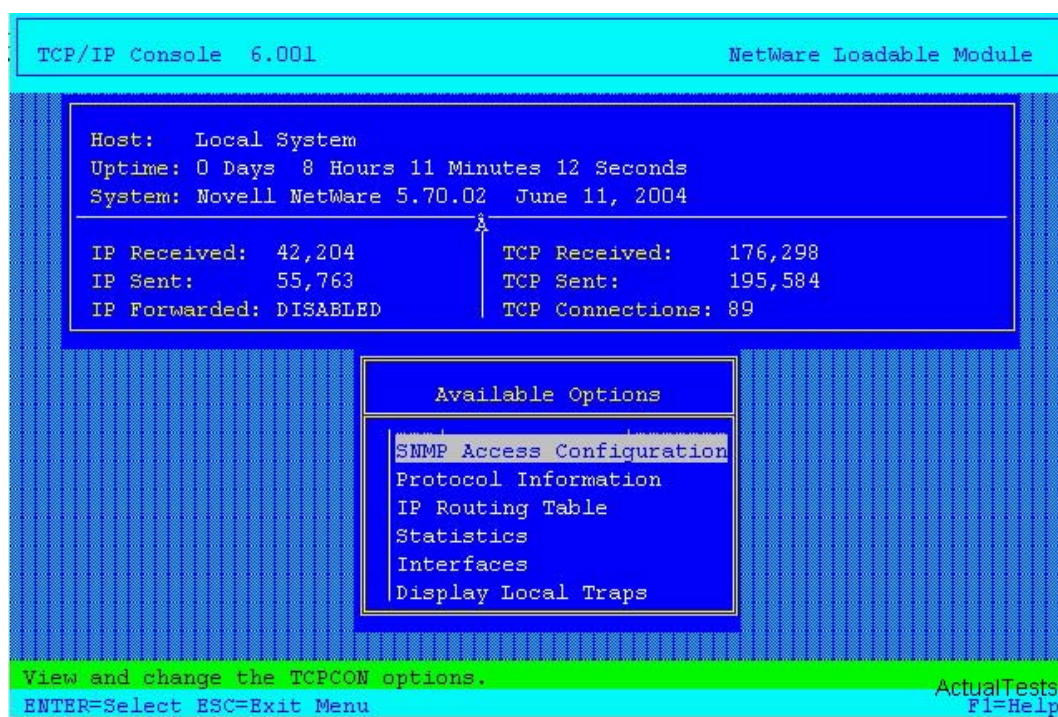
- A. No, the Appliance installation program removes all partitions and re-images the entire drive.
- B. Yes, but you must first install Novell Storage Services (NSS) on the server and upgrade the volume.
- C. No, NetWare 4.2 traditional volumes are incompatible with the Appliance software.
- D. Yes, but you must first add the long name space (LONG.NAM) to the USERS volume before installing the Appliance.
- E. Yes, NetWare 4.2 volumes are compatible with the Appliance software.
- F. No, the Appliance software may corrupt the data on the NetWare 4.2 volume when it is mounted.

Answer: A

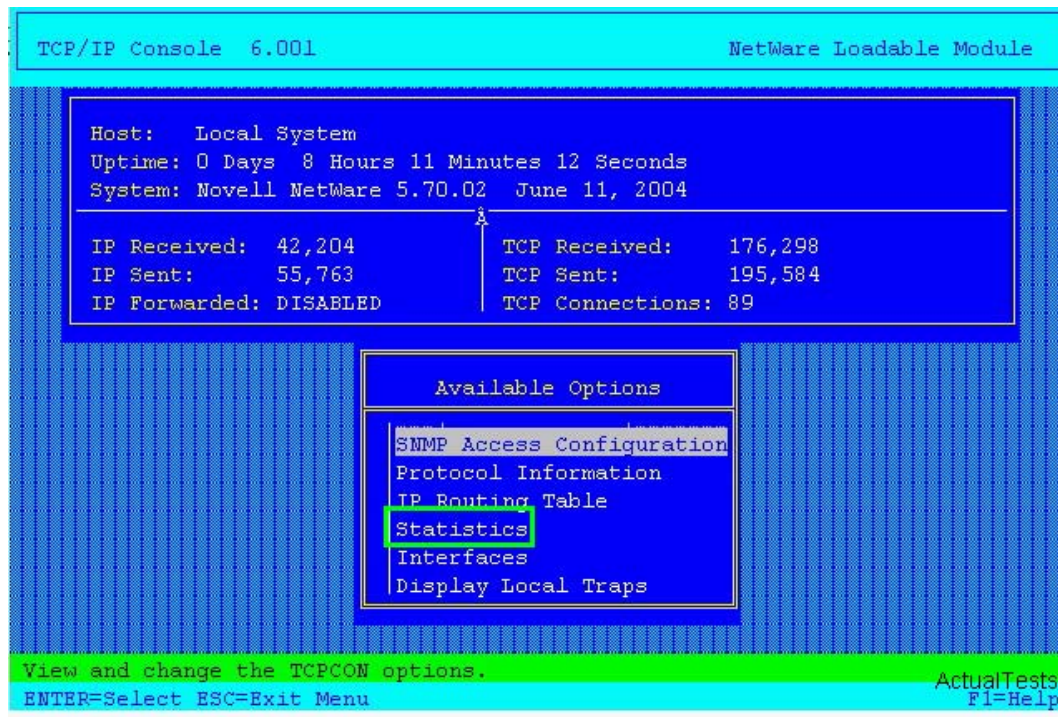
QUESTION NO: 2 HOTSPOT

Click the Point and Click button to begin.

Click on the TCPCON option you would select if you wanted to view detailed statistics on Exterior Gateway Protocol (EGP) communications.



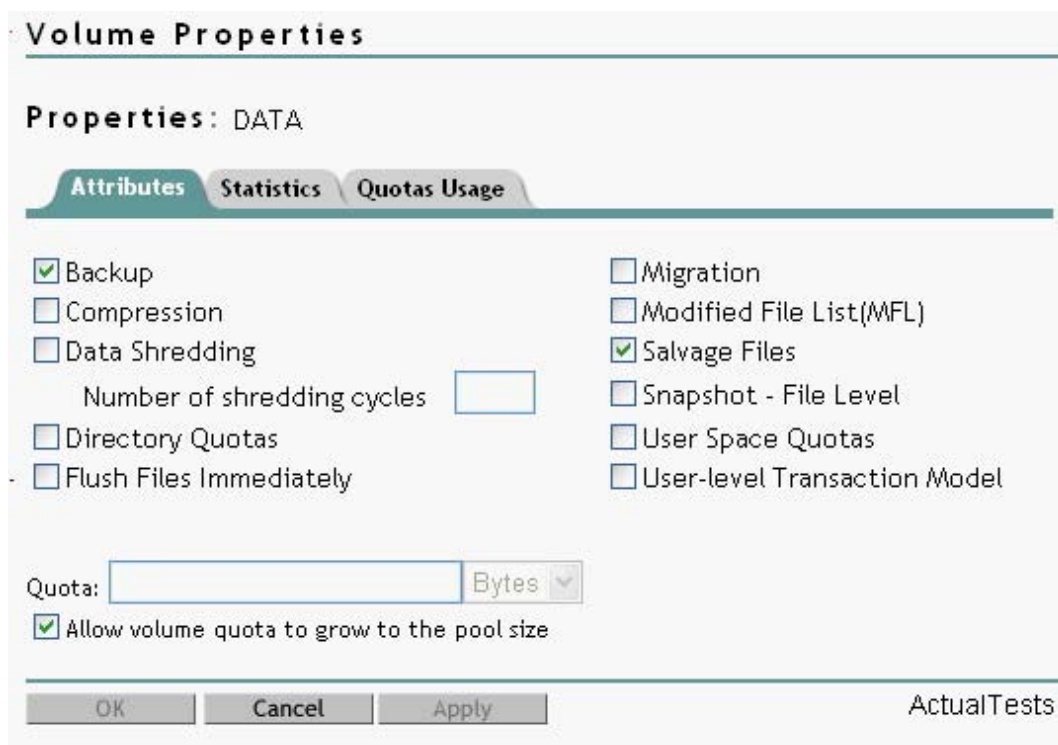
Answer:



QUESTION NO: 3 HOTSPOT

Click the Point-and-Click button to begin.

The graphic shows the NSS volume attributes. Click the feature that you should activate to automatically scramble data that is deleted from the volume.



Answer:

Volume Properties

Properties: DATA

Attributes | Statistics | Quotas Usage

☒ Backup
☐ Compression
☒ Data Shredding
Number of shredding cycles:
☐ Directory Quotas
☐ Flush Files Immediately

☐ Migration
☐ Modified File List (MFL)
☒ Salvage Files
☐ Snapshot - File Level
☐ User Space Quotas
☐ User-level Transaction Model

Quota: Bytes
☒ Allow volume quota to grow to the pool size

ActualTests

QUESTION NO: 4

Your organization has implemented ZENworks for Servers Tiered Electronic Distribution with Enterprise Branch Office. To support this configuration, which IP port must be kept open on your organization's firewall?

- A. 21
- B. 20
- C. 631
- D. 1299
- E. 2222
- F. 873

Answer: D

QUESTION NO: 5 HOTSPOT

Click the Point and Click button to begin.

Click on the location where you would drop the contents of the SYS volume on the source server if you wanted them to be migrated to DA4_DATA on the destination server.