

ISLEVER

050-663

Novell edirectory and active directory

DEMO

<https://www.islever.com/050-663.html>

<https://www.islever.com/novell.html>

For the most up-to-date exam questions and materials, we recommend visiting our website, where you can access the latest content and resources.

QUESTION NO: 1

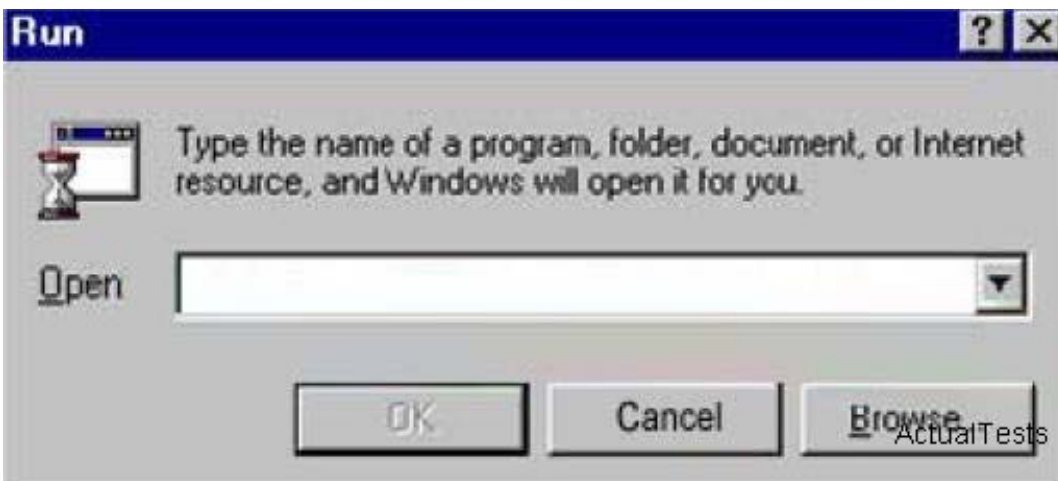
Which groups are created by default when a Windows 2000 server is installed?
(Choose 3.)

- A. Users
- B. Guests
- C. Backup Operators
- D. Domain Operators
- E. Network Operators
- F. Server Administrators

Answer: A,B,C

QUESTION NO: 2 CORRECT TEXT

You would like to run the default Microsoft Management Console. Enter the command that you would use in the Open box to start this utility.



Answer: mmc

QUESTION NO: 3

Which statements about Windows 2000 native mode are true? (Choose 2.)

- A. Native mode allows backward compatibility.
- B. After you make the switch to native mode, it cannot be undone.
- C. After you make the switch to native mode, you can switch back to mixed mode at any time.
- D. You can switch to native mode if there are Windows NT domain controllers within the domain.

E. Native mode allows you to take advantage of all features and capabilities of Active Directory.

Answer: B,E

QUESTION NO: 4

Your network environment includes 1 Windows 2000 server, 5 Windows 2000 workstations, 5 Macintosh computers, and 2 printers. You need to share company records that are stored on the server. Which file system would you choose during a Windows 2000 Server installation?

- A. HPFS
- B. NTFS
- C. OS/2
- D. FAT-16
- E. FAT-32

Answer: B

QUESTION NO: 5

What is the primary mechanism supporting the Kerberos v5 protocol?

- A. Key Generation Center
- B. Key Distribution Center
- C. Ticket Granting Service
- D. Key Distribution Control
- E. Mutual Authentication Center

Answer: B

QUESTION NO: 6

What is required before eDirectory can be installed on Windows 2000? (Choose 2.)

- A. NTFS
- B. ConsoleOne
- C. eDirectory manager
- D. SLP Directory agent
- E. Administrative rights

Answer: A,E

QUESTION NO: 7

Which objects displayed in ConsoleOne can be modified and allow you to add eDirectory users to an Active Directory group? (Choose 2.)

- A. Group
- B. Server
- C. Organization
- D. eDirectory User
- E. Organizational Unit

Answer: A,D

QUESTION NO: 8

Which are features of Windows 2000 Advanced Server? (Choose 2.)

- A. It supports up to 4 GB RAM.
- B. It supports multiple processors.
- C. It provides clustering technologies.
- D. It supports Windows 95 device drivers.
- E. It supports RAID technology for software virus protection.

Answer: B,C

QUESTION NO: 9

When would Windows 2000 Server be a good choice over Windows 2000 Professional? (Choose 2.)

- A. When a web server is needed
- B. When Terminal services are needed
- C. When plug-and-play support is needed
- D. When local security for files is needed
- E. When multiple processors exist in a machine

Answer: A,B